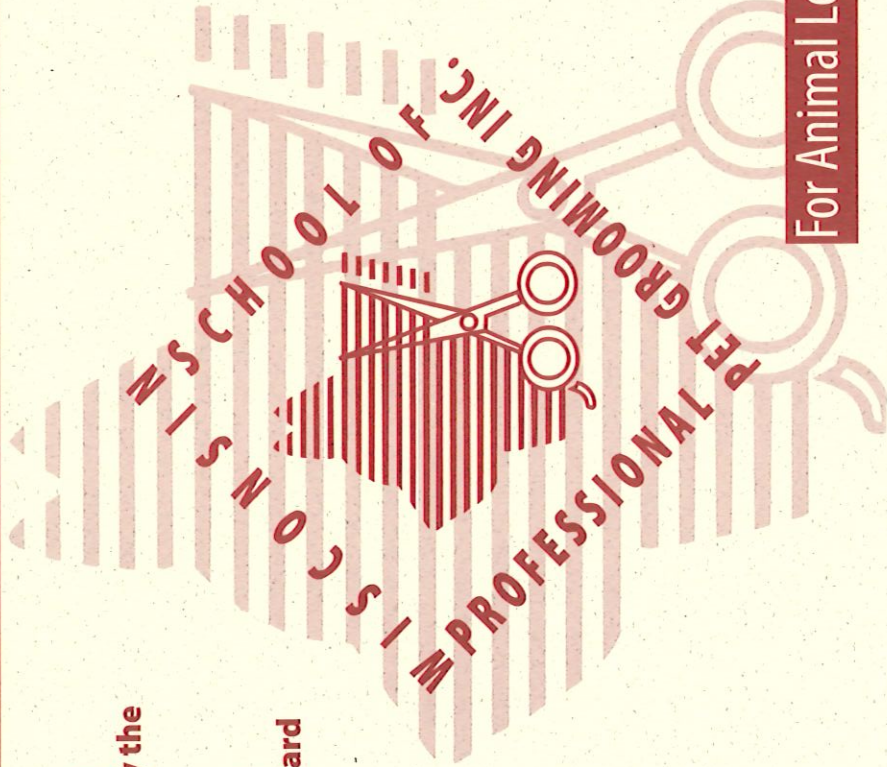


P R O G R A M G U I D E

— Bonded and
Approved by the
State of
Wisconsin
Educational
Approval Board



W359 N5920 Brown St.
Suite 102
Oconomowoc, WI 53066



For Animal Lovers Only

See Your Future... AS A PROFESSIONAL PET GROOMER!

WISCONSIN SCHOOL OF PROFESSIONAL PET GROOMING, INC.

If you believe that your strongest attributes include a true affection and respect for animals along with the personal skills to effectively deal with people, then the Wisconsin School of Professional Pet Grooming, Inc. would like to hear from you!

Those who have a true affection for animals will find a career in professional pet grooming tremendously satisfying. Skilled and knowledgeable professionals in the areas of canine health and grooming have found financial independence and a personally rewarding career.

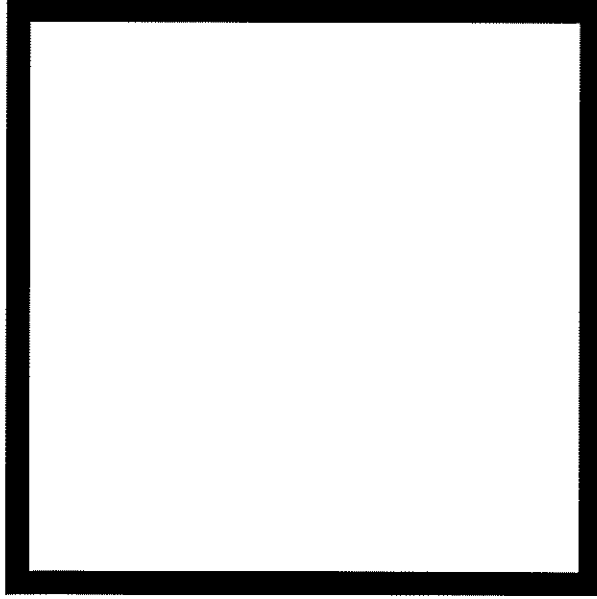
Graduates of Wisconsin School of Professional Pet Grooming, Inc. have found endless job opportunities and the demand for trained professionals continues to climb. If you are an animal lover who is interested in beginning a career in pet grooming, call today for a career consultation and tour of the facilities.

WSPPG, INC., W359 N5920 Brown St., Suite 102
Oconomowoc, WI 53066

PHONE: (262) 569-9492 **FAX:** (262) 569-1841

E-MAIL: wsppg@wsppg.com

WEBSITE: www.wsppg.com



STUDENT SERVICES

PET CAREER COUNSELING, SCHOOL TOURS and REGISTRATION can be arranged through our Admissions Office.

GUEST STUDENT PARTICIPATION can be scheduled through the Admissions Office for those seeking hands-on experience to assist in their decision making process.

HOUSING - we will be happy to assist you with finding local housing during your enrollment at the Wisconsin School of Professional Pet Grooming.

FINANCIAL ADVISORY SERVICES are available for those seeking funding resource advice and consultation.

EMPLOYMENT ADVISORY SERVICES are offered to WSPPG students and graduates. Students and graduates are able to look for job opportunities on our website under employment at www.wsppg.com. (WSPPG makes no claim or guarantee of job placement.)

ALUMNI SERVICES are available for all graduates.

CONTINUING EDUCATION WORKSHOPS are available to students and graduates interested in business ownership and management. (See course offering for specific topics.)

INDIVIDUAL CONSULTING SERVICE is available to graduates and employers seeking innovative solutions and ideas pertinent to their particular business situation. Appointments can be scheduled with the School Director under the name "Solutions".

RETURN TO: WSPPG, INC.; W359 N5920 Brown St., Suite 102, Oconomowoc, WI 53066 **OR FAX: (262) 569-1841**

I WOULD LIKE:

To Enroll in Course: _____

Session Date: _____

To schedule a career consultation and campus visit on:

Date: _____ Time: _____

To participate as a Guest Student on:

Date: _____ (8:00 a.m.)

NAME: _____

ADDRESS: _____

CITY: _____ STATE: _____ ZIP: _____

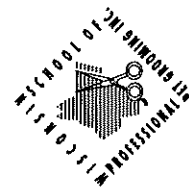
PHONE: Day (_____)

Evening (_____)

I would like information on:

Student Services _____

Continuing Education Workshops _____



About the Director

Delores Lilige's background in the pet industry is wide and varied. Her interest in animals reaches back over 40 years. She has been professionally involved in some facet of the pet grooming industry since 1975 including business ownership, training all-breed obedience, handling and showing.

She is the founder of the State of Wisconsin Professional Dog Groomers Association as well as the originator of Midwest student grooming competitions, in which WSPPG Students are undefeated.

As Founder of WSPPG, Lilige designed the progressive performance based curriculum utilized today. In conjunction with the curriculum development, she wrote Grooming You Can Count On (used for training at WSPPG and considered by many as their trade "Bible").

Lilige also implemented an Instructors' Training Program which offers continuing education for instructors enabling them to become certified at various levels of their teaching skills. This augmentation assures students that they are not only being taught by Master Groomers but by competent Educators as well.

With over 40 years experience in the industry, Delores Lilige has also developed

and offered short courses and workshops for business managers and prospective owners. These courses include retailing, licensing, business start-up, laws and regulations, creating a business plan, cash flow projecting, marketing, etc. She is also available for Pet Industry consultations through her firm, "Solutions".

School Philosophy

The Wisconsin School of Professional Pet Grooming, Inc. is dedicated to educational excellence and providing students and graduates with the skills needed to maintain a high level of professionalism. This has been done and will continue to be achieved through a comprehensive program of classroom theory and lecture, combined with the practical application of modern grooming techniques on dogs from **ALL CANINE BREED GROUPS**.

This philosophy of a complete education has helped to create individuals with the skills necessary to become competitive and highly sought-after members of the pet grooming industry, thus opening doors to a variety of career options for graduates.

The Professional Pet Grooming Course

The Professional Pet Grooming Course is based on a step-by-step approach to

teaching the art of grooming. It consists of one hour of theory and six practical hours of grooming each day.

WSPPG is the only school in the country to guarantee students practical hands-on experience in grooming all groups of canine breeds. Students begin by performing basic grooming techniques and then progress to more difficult grooming projects throughout the course as their theoretical knowledge and grooming skills develop.

During the classroom theory portion of the course students become completely familiar with the breed history, characteristics, temperaments and grooming standards of 135 plus dog breeds recognized by the American Kennel Club (AKC). Upon completion of the Professional Stylist 600 Hr. Course, each graduate will have a minimum of 400 hours of practical experience in grooming and be qualified to groom dogs from all AKC breed groups.

Certificate of Completion

Students, upon completion of all course requirements, are awarded a Certificate of Completion as evidence that they have been trained by a reputable Career College.

ARE YOU PREPARED TO PURSUE YOUR GOAL OF BECOMING A PROFESSIONAL PET GROOMER ?

Have you discussed your career choice with your family? Do they support you?

Have you considered what sacrifices would have to be made to embark in this career?

Are you willing to make these sacrifices to reach your goal?

Have you determined your financial need for the period of time required for your career training?

Do you have the financial resources available to you or know where to find them?

If you need assistance in answering any of the above questions, please call WSPPG, Inc. at (262) 569-9492. If you have already decided that this "is" the career for you, we will be happy to send you an application and schedule an appointment for you to visit our campus and fill out an enrollment packet.

QUESTIONS?



Please use the check list provided to list any questions or concerns that you might have...

Call our Admissions Office for Answers!

(262) 569-9492

WISCONSIN SCHOOL OF PROFESSIONAL PET GROOMING, INC.

Build A Rewarding Career

The simple fact that you are reading a Wisconsin School of Professional Pet Grooming brochure tells us something about you. Our guess is that you have at least one if not all of the following attributes:

- ✓ Your interest in animals is high.
- ✓ You consider yourself to be an "animal lover".
- ✓ You believe in the principal of kind and humane treatment of animals.
- ✓ You have one or more pets, and if it were possible, you'd have a few more.
- ✓ You have always wanted a career in which you could be thoroughly satisfied and at the same time financially independent.

These are just some of the qualities the students and graduates of WSPPG tell us about themselves. There are many more reasons why individuals contact

the Wisconsin School of Professional Pet Grooming, but it all focuses on each person's tremendous love, respect and admiration for animals. These are the attributes needed to begin a successful career in the pet industry.

Career Opportunities In The Pet Industry

There are a number of career opportunities available to graduates who have become certified at WSPPG. They have become business owners of pet shops, grooming salons, and kennels. Many work in association with salons, veterinary clinics, commercial boarding or hobby kennels, professional dog show handlers or humane societies.

WSPPG is proud to have achieved a fine reputation in the pet industry through graduates who have demonstrated outstanding skills and professionalism in their fields. The continued improvement of professional standards and educational excellence is the emphasis and accomplishment of the school.

WSPPG History

Recognizing the growing demand for professional pet groomers, WSPPG Director, Delores Lilje, began working on the development of a grooming course in 1984. Drawing on her vast experience in the pet industry, she structured the course curriculum to provide a consistent and professional method of instruction which could be accomplished through practical experience, classroom theory, lecture and demonstrations.

Upon evaluation of the school's policies, instructional methods and curriculum, the State of Wisconsin Educational Approval Board granted WSPPG permission to commence enrolling students in 1985. Through the input of WSPPG staff and faculty members, as well as industry professionals, the course has been expanded over the years to encompass a broad spectrum of pet related topics. In October of 1991 through October, 1995, the Wisconsin School of Professional Pet Grooming was accredited nationally by The Accrediting Commission of Career Schools and Colleges of Technology.

IS A CAREER CHANGE RIGHT FOR YOU ?

Ask yourself the following questions:

Are you presently employed? Full-time or Part-time?

List what you like and dislike about your current position?

What aspects of a career are important to you?

___ Income: Desired annual amount?

___ Benefits: Describe your needs and preferences.

___ Flexibility: Number of days per week you want to work and hours per week?

___ Working Conditions

___ Enjoyable Work

___ Opportunity for Business Ownership

IS A CAREER IN PET GROOMING RIGHT FOR YOU ?

Do you have the desire to perform in a service-oriented industry?

Have you talked to other Professional Pet Groomers about a career in pet grooming?

Do you have an eye for detail? Do you enjoy working with your hands?

Do you have the fortitude to put forth the effort to obtain the knowledge and skills necessary to be an asset to this profession?

Do you have the ability to accept constructive feedback and learn from it?

Do you have the motivation needed to uphold the standards of excellence attributed to a Certified Professional Pet Groomer?

Have you had any experience working with pets or do you have the desire to do so?

Do you have the emotional stability and patience to work with less than compliant pets?

Do you have any physical limitations that would restrict grooming activities?

Do you know if jobs or business opportunities are plentiful in Pet Grooming?

Have you determined that either business ownership or employment in the Professional Pet Grooming field will generate a satisfactory income and benefit package for you?

Are work schedules and conditions in the industry acceptable to you?

THE PROFESSIONAL PET GROOMING COURSE

PROFESSIONAL STYLIST (600 HOURS) Course Outline: 16 Units

The Professional Pet Grooming Course includes approximately 80 hours of subject matter vital to work in the field of professional pet grooming such as: sanitation, anatomy, breed identification and standards, behavior and handling, Mixed breed styles, internal and external parasites, diseases, nutrition, first aid (including CPR) Scissored Breed grooming, reproduction, reproductive problems, musculoskeletal problems, Spaniel and Setter grooming, geriatric care, canine gastrointestinal problems and immunization and Terrier structure and grooming patterns.

In addition to pet related information, students are taught to develop the interpersonal skills needed to work in this service industry such as client relations, product knowledge and retailing, record keeping and office skills, pricing, etc. Elements necessary to seeking employment and on-the-job problem solving (including handling emergency situations) are also covered.

Because The Wisconsin School of Professional Pet Grooming, Inc. believes each individual will or should continue to grow after graduation in their chosen career, outside resources for continuing education are promoted.

(SEE COMPLETE COURSE DESCRIPTION.)

COURSE DESCRIPTION

Unit 1

Introduction to Pet Grooming & The Working Breeds

This unit includes orientation which covers: school policies and procedures, basic study skills, the use and maintenance of student's equipment as well as the school's equipment and sanitation procedures. Topics included are: canine anatomy, the American Kennel Club (AKC) purpose and functions, the AKC Working Breed standards, grooming procedures, canine behavior and handling.

LAB: Introduction to practical pet grooming skills. Practical application on "Brushables" (Smooth, short, long and longhaired part coated breeds).

Unit 2

The Mixed Breeds

Mixed Breeds and modified trims for purebreds are the focus of this unit, including clipping and scissoring techniques. Topics included are: styles of Mixed Breed and modified trims, external parasites, insecticides and parasite control.

LAB: Continuation of practical skills in the grooming of "Brushable" breeds. Introduction to mixed breed grooming.

LAB: Continuation of practical skills in the grooming of scissored breeds. Special emphasis will be placed on developing hand-scissoring skills and corrective grooming

Unit 6

The Sporting Breeds

Sporting Breed standards and grooming procedures are the focus of this unit. Special attention is given to the grooming of Spaniels and Setters. Topics included are: geriatric care (handling and grooming techniques for the older dog), epilepsy, eye problems and ear problems.

LAB: Continuation of practical skills in the grooming of the scissored breeds. Introduction to the grooming of Spaniels and Setters. Emphasis will be placed on carding and thinning techniques.

Unit 7

The Hounds & Miscellaneous Breeds

Hounds and Miscellaneous Breed standards and grooming procedures are the focus of this unit. Topics included are: canine gastrointestinal problems, with a focus on acute gastric dilation (bloat) and gastric torsion.

LAB: Continuation of practical skills in the grooming of Spaniels and Setters.

LAB: Continuation of grooming Spaniels, Terriers, and scissored breeds.

Unit 11

Terrier Patterns

In depth study and evaluation of Terrier structure and grooming patterns.

LAB: Continuation of grooming Spaniels, Terriers and scissored breeds.

Unit 12

Review and Final Exam

LAB: Continuation of grooming Spaniels, Terriers and scissored breeds.

Unit 13

Training the Receptionist

Topics of study will include projecting a professional image and developing interpersonal skills, telephone techniques, client relations, office procedures/record keeping and introduction to pricing.

LAB: Introduction to time management and organization of grooming projects. Continuation of skill development in all breeds.

ADMISSION REQUIREMENTS

Attributes of a Prospective Pet Groomer

To ensure success in the WSPPG Professional Pet Grooming Course the prospective students should have:

- ✓ **Affection and respect for pets** which promotes the ability to handle them in a safe, humane manner.
- ✓ **Interest in developing interpersonal skills** which enable you to meet and speak knowledgeably with customers.
- ✓ **Patience** to cope with a variety of canine dispositions.
- ✓ **Willingness** to work physically strenuous and sometimes long hours.
- ✓ **The ability to accept criticism** and learn from it in order to evaluate your own work and set high standards for yourself.
- ✓ **The personal desire** to become a knowledgeable and skilled expert in the field of professional pet grooming.

Requirements

The following requirements pertain to all persons applying for admission. Applicants must:

1. Be at least 18 years of age or have the consent of a parent or legal guardian.
2. Provide documentation of high school graduation or GED equivalent and grade transcripts.
3. Be proficient in English language skills.
4. Be in sound physical and mental condition without disabilities that would affect the student's ability to succeed in the Professional Pet Grooming Course.

TUITION AND FINANCES

The Professional Pet Grooming Course (Full-Time Day)

<u>Application Fee</u>	\$ 100.00
<u>Tuition</u>	\$ 6,400.00
TOTAL	\$ 6,500.00

Supplies and Equipment

Students are required to have an equipment kit. The list of supplies and equipment needed is included in the enrollment package. Students may purchase their kits independently providing they are identical to the supplies used by the school or they may be purchased through the school's retail store.

Supply & Equipment Kit

(Approximately) \$ 1,066.45

Orders for equipment through the WSPPG Retail Store must be placed and prepaid 14 days prior to the start of class.

Business Consultations

Available by private contract under the name "Solutions".

Unit 3

The Herding Breeds

Herding Breed standards and grooming procedures are the focus of this unit.

Topics included are: common skin problems (their recognition and care), internal parasites and basic canine nutrition.

LAB: Continuation of practical skills in the grooming of modified and mixed breeds with greater emphasis on scissoring skills.

Unit 4

The Non-Sporting Breeds

Non-Sporting Breeds are the focus of this unit. Special attention is given to the grooming of the Poodle, Bichon Frise and other scissored breeds. Topics included are: canine heart disease, basic canine first aid procedures, CPR for animals and making and applying bows.

LAB: Continuation of practical skills in mixed breed grooming. Introduction to grooming the Poodle and Bichon.

Unit 5

The Toy Breeds

Toy Breed standards and grooming procedures are the focus of this unit. Topics included are: Poodle patterns, canine reproduction, reproductive problems and musculoskeletal problems (such as hip dysplasia).

Unit 8

The Terrier Breeds

Terrier Breed standards and grooming procedures are the focus of this unit. Topics included are: vaccinations (the diseases for which dogs are commonly vaccinated and the basics of canine immunization) and multi-system problems.

LAB: Continuation of practical skills in the grooming of Spaniels and Setters. Introduction to grooming the Terriers including hand stripping techniques.

Unit 9

Cat Grooming Techniques & Product Study and Retailing

Cat grooming procedures will be discussed, as well as feline behavior, handling techniques and diseases. Comprehensive study of products and their use in the grooming practice including pesticides and liceing, shampoos, conditioners, gels, mousses, texturizers, cleaning products, etc. Retailing basics will be covered.

LAB: Continuation of practical skills in the grooming of Terriers.

Unit 14

Seeking Employment

This unit focuses on seeking employment, what to look for in a shop, tools of the trade, what questions to ask future employers and what employers expect of you. Resume writing and interviewing techniques will be discussed.

LAB: Students will practice acquired skills by performing all functions in the reception area while continuing to develop all breed grooming skills and time management.

Unit 15

Problem Solving

Emphasis is placed on problem solving, handling customer complaints and emergency situations. Continued development and practice of all office functions.

LAB: Continuation of skill development in all breeds and time management and organization.

Unit 16

Continuing Education

Topics include completion of record keeping and pricing. Professional organizations and affiliations as well as continuing education sources for employees, owners and managers will be covered.

LAB: Completion of hands-on projects.

2025 SCHOOL CALENDAR

The Professional Pet Grooming Course - Full Time Day Student
Classes Held: 8:00 A.M. to 4:30 P.M. (Monday through Friday)

PROFESSIONAL STYLIST
(600 Hours) 16 Weeks/16 Units

CLASS BEGINS	ENROLLMENT DEADLINE	GRADUATION DATE
January 20, 2025	December 2, 2024	May 9, 2025
March 17, 2025	March 3, 2025	July 3, 2025
May 12, 2025	April 28, 2025	August 29, 2025
July 7, 2025	June 23, 2025	October 24, 2025
September 1, 2025	August 18, 2025	December 19, 2025
October 27, 2025	October 13, 2025	March 13, 2026

School Holiday Break: December 20, 2025 through January 18, 2026

Registration Deadline:

Enrollment procedures must be completed, acceptance finalized and all fees paid by the
ENROLLMENT DEADLINE DATE.

BUSINESS CONSULTATIONS - Private entrepreneurs and corporations in the pet industry may contact the school for information and advice on any subject related to pet grooming. Services such as market analysis, business and employee management, marketing feasibility and techniques, cash flow projecting, time management, etc. are provided through the name "Solutions" and are available under private contract. Appointments for speaking engagements to groups and organizations on specific pet industry related subjects can also be arranged through "Solutions".