



# WESLI

WISCONSIN ESL INSTITUTE

## Celebrating 40+ Years of Excellence

Madison, Wisconsin, USA | Director: Ashley Micklos



## About the Wisconsin ESL Institute (WESLI)

### WESLI Highlights

- Full immersion experiences at our institute in Madison, Wisconsin, USA
- Online language learning options
- Fully customizable programs for individuals or groups
- In-country training for business or teacher development programs

### Overview of WESLI

Founded in 1981, WESLI has earned an excellent reputation among universities, colleges, and businesses for equipping international students and employees with skills to succeed in competitive academic and professional environments. Students from all over the world have had satisfying, memorable cross-cultural experiences at WESLI and in Madison. WESLI offers a variety of intensive English programs to help students achieve their personal, professional and academic goals, including General English, English Plus, University Pathways, Test Preparation, Business English, Tutoring, and a Teacher Training Program.

WESLI has a long history of a family-like atmosphere, as teachers and staff care about students personally while they assist them academically. Most staff members have lived abroad, speak one or more foreign languages, have years of experience teaching English, and have been at WESLI for more than 25 years.

WESLI offers both online, in-country and immersion programs. For programs in Madison, Wisconsin, WESLI offers accommodation for students at an American homestay family. All students also have the option to participate in weekly activities and be paired with an American conversation partner. It is our goal that students fully integrate into the Madison community during their stay.



## WESLI's Mission

The mission of Wisconsin English as a Second Language Institute (WESLI), a for-profit, stand-alone IEP, is to prepare students to be collaborative leaders in their chosen academic and professional environments. WESLI will accomplish this mission through exceptional ESL Instruction and Student Services; guided by the following principles as applied to all areas of the organization, staff and students alike:

**Cultural Competence:** We strive for continued awareness of our individual values and how those affect the way we approach differences. Knowledge and skills which facilitate cross-cultural communication are developed in the spirit of respect, openness and curiosity.

**Collaboration:** We co-facilitate the accomplishment of tasks and goals with the understanding that all members of the organization participate with their individual strengths along with the benefit of their previous education and experience.

**Critical Thinking:** We cultivate the courage to develop an individual viewpoint with the understanding that it is partial and complementary; the depth and rigor of thought that requires all material be held to the same standards of proof; the understanding of our connection to solutions to problems; and the perseverance to apply insight with the understanding that best interests will be served by allowing people to come to their own conclusions.

## Accreditation

### Commission on English Language Program Accreditation

WESLI is accredited by the Commission on English Language Program Accreditation for the period December 2015 through December 2025 and agrees to uphold the CEA Standards for English Language Programs and Institutions.



WESLI has been accredited by CEA since 2005. CEA is recognized by the U.S. Secretary of Education as a nationally recognized accrediting agency for English language programs and institutions in the U.S. For further information about this accreditation, please contact CEA ([www.cea-accredit.org](http://www.cea-accredit.org)).

### Quality English & Quality English Online Courses

Quality English schools are carefully selected from the best Independent English language schools in English speaking countries. They are renowned for their quality and reputation and offer a choice of general and specialized courses in desirable locations around the world. All schools are independently owned and managed. They are not part of a chain and each school has its own unique character.



### Wisconsin Education Approval Program

WESLI's Teacher Training Program is accredited by the State of Wisconsin's Educational Approval Program.

## WESLI Programs

### Intensive English Program: General & Academic English

The full-time study curriculum will include courses in the four core language skills: reading, writing, grammar, and listening and speaking. In addition, these classes will assign homework, approximately 8-10 hours per week. Students will join other WESLI students in these core classes, maximizing language learning potential with students required to communicate in English with other students. These classes will have a maximum of 14 students from a variety of other countries. Students will be placed into one of seven levels, based on an initial placement test, so they will be comfortable yet challenged according to their English proficiency level.

Classes focus on developing the skills necessary to succeed. Students spend time developing their critical reading skills; writing paragraphs and compositions on a variety of topics; learning grammar structures and usages; and learning how to communicate for different contexts and purposes. Students also learn strategies to improve their vocabulary acquisition.

**Beginning Levels (100, 200, and 300):** After completing Level 300, a student can conduct basic conversations, manage everyday life in an English-speaking environment, and read and write simple material.

**Intermediate Levels (400 and 500):** After completing Level 500, a student can converse comfortably on most subjects, read some basic academic and professional texts, and write an academic-style essay.

**Advanced Academic and Business Skill Levels (600 and 700):** After completing levels 600 and 700, a student can participate in most professional situations, and is ready to succeed in an American university program. Advanced skills include, for example, giving presentations, leading discussions and debates, writing essays, and using critical thinking skills to analyze readings.

### English Plus & Volunteering

This program is for students looking for more than just language classes. Students can choose to volunteer or take classes through WESLI partners – like dance or cooking classes. WESLI is happy to talk to students to find out more about their interests and what additional classes they would like to take during their stay.

### Business English

The business program curriculum includes the core language skills and courses in International Business Essentials, Public Speaking & Cross-Cultural Communication, Business Writing and Pronunciation. In addition, business visits are organized within the Madison community so that students get the opportunity to use their English in a real business context and network with business people.

## Test Conversion Table

WESLI LEVEL	MPT	MTELP	TOEFL iBT	IELTS	TOEIC
700	N/A	75-79+	68-80+	6-6.5+	750-825+
600	N/A	68-74	56-68	5.5-6.0	650-750
500	N/A	60-67	45-56	5.5	550-650
400	40-50	46-59	37-45	5.0	450-550
300	30-39	Below 45	28-37	0-4.5	350-450
200	25-29	N/A	N/A	N/A	N/A
100	0-24*	N/A	N/A	N/A	N/A

\* 100 OR 200 DEPENDING ON THE SPEAKING SKILLS

## WESLI University Partners

### WESLI-Beloit Pathway to Excellence Online Program

This online, for-credit program combines English proficiency with academic and social knowledge crucial for maximum success in US Universities. Courses are delivered by highly ranked Beloit College in partnership with WESLI. More information can be found on the website (<https://www.beloit.edu/pathway-to-excellence/>).

### WESLI + University of Wisconsin-Madison Visiting International Student Program

This program is designed for students who wish to participate in the non-degree Visiting International Student Program (VISP) at UW Madison, but don't quite meet the required minimum English proficiency (80 TOEFL) needed for admission. Students in this program will be able to focus on improving their English proficiency in preparation for taking one, two, or even transitioning to full time academic classes at UW-Madison. More information can be found on the website (<https://visp.wisc.edu/wesli/>).

### TOEFL Waiver & Conditional Admission

Due to its excellent reputation and standard of teaching, WESLI has partnerships with over 30 Universities in the US. WESLI offers conditional admission to all of its partner universities as well as a TOEFL Waiver Program for students that complete their language study at WESLI. Some of WESLI's partner universities include:

- University of Wisconsin System (9 campuses)
- Marquette University
- Beloit College
- Lawrence University
- Concordia University Wisconsin
- Madison College
- Milwaukee School of Engineering
- Mount Mary University
- Saint Norbert College
- Texas Wesleyan University
- Wisconsin Lutheran College

# WESLI Teacher Training Program (WTTP)

## TEFL Certification, Professional Development & Curriculum Support

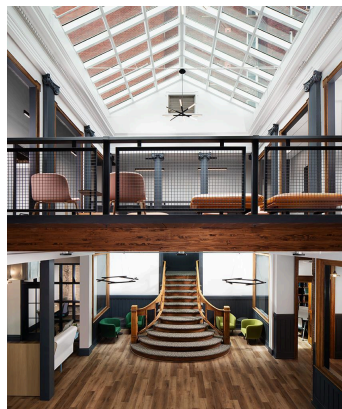
In 1999, WESLI decided to share its teaching experience and expertise by offering a TEFL (Teaching English as a Foreign Language) training program, the WESLI Teacher Training Program. Graduates of WTTP have gone on to teach English in over 45 countries. The mission of WTTP is to revolutionize the way our candidates look at learning and teaching through a practical, hands-on program that prepares them to teach English domestically and overseas. WTTP will accomplish this mission in an atmosphere that supports growth in the science and the art of teaching.

The 130-hour WESLI Teacher Training Program is designed to train aspiring teachers, or current practitioners, in the fundamentals of English as a Second or Other Language (TESOL) in an environment that encourages collaboration, critical thinking, and cultural competency. This goal is achieved by a balance of theory and practice, with particular emphasis on practical, hands-on experience. The program will provide candidates with the opportunity to apply and reflect upon theoretical knowledge of language acquisition theory, ESL/EFL methodology, and assessment theory in a real ESL classroom.

Our comprehensive course provides graduating trainees with a TEFL Certificate that gives them an edge in finding English as a Foreign Language (EFL) employment overseas. Graduates teaching in Asia, Latin America, Africa, and Europe often tell us about the importance WTTP has had in their language teaching positions. Trainees, both previously trained teachers and those without any teaching experience, notice substantial improvement in the effectiveness of their teaching.

## WESLI Facilities

Wesli is located in the city center of Madison, Wisconsin's state capitol. The building was renovated in 2020 and offers students a modern environment to study English. The building has 8 classrooms, a small kitchen, study spaces, and wonderful views of the capitol building across the street!



---

# Community Engagement

## Homestay Accommodation Program

WESLI offers students accommodation through our Homestay program, where students live with a local American family! This is an amazing opportunity to practice English with local residents, experience American family life, and develop a life-long relationship with a host family. Students can choose different catering options. If private accommodation is preferred, please inquire about local options.

## Conversation Partner Program

WESLI students can sign up to meet with a local resident for language exchange after classes. Students can practice their English skills and share their own language and culture with their conversation partner.

## Activities and Volunteering

WESLI offers weekly extracurricular programming for students to practice English outside of class, engage with the local community, and learn about the local culture. Activities are seasonal and may include outdoor sports or nature walks, skiing and ice skating in the winter, trips to Milwaukee and Chicago, as well as local cultural activities like Brat Fest, the Farmers Market, and more! Students can sign up for activities individually, or inquire about our activity pass to get access to all extracurricular activities.

## About WESLI's New Logo

The WESLI Logo featuring the Wisconsin State Capitol building has been representing the quality and community for over 20 years. As we step forward into the future, we reflect on how our community expands beyond the City of Madison and Wisconsin. In the new logo, the two blue "stripes" represent the two lakes in Madison, Wisconsin – where our school began and where we welcome students every year for immersive English experiences. Between Lake Mendota and Lake Monona is the isthmus where WESLI is located, across from the State Capitol building. The language mark can be imagined as a comma for what is to come; or as a speech balloon representing language...As we step into the future, we are reminded of Wisconsin's state motto – "*Forward!*"

