

CHAMBERLAIN UNIVERSITY SAMPLE ADVERTISEMENTS

Date Range: February 2023 to February 2024
National



CHAMBERLAIN
UNIVERSITY

TABLE OF CONTENTS

Section 1: (Agency)	
Student Recruitment Ads	X
- Search Copy	4
- Pre-Roll Online Videos	6-9
- Social Ads	11-18
- Display Ads	20-22
Section 2: (Chamberlain)	
Website Landing Pages	X-X
Section 3: (Chamberlain)	
Brochures	X-X

CHAMBERLAIN
UNIVERSITY



Search copy

Paid Search Copy (Google Search)

Ad is specific to your location and search history; the search copy will pick the most headline and description it thinks caters to the searcher/user. These are a few examples of what the algorithm could serve.

Brand

[Chamberlain University Nursing | Chamberlain St. Louis](#)

Step Forward to Serve Your Community! Earn Your BSN in 3 Yrs from Chamberlain University®. Join the Largest Nursing School in the Country and Over 100K Alumni Who Chose Chamberlain.

[Chamberlain University MSN-NP | Online MSN-NP Program For You](#)

Take Your Nursing Practice to the Next Level With Chamberlain University® & Become a NP. Choose From FNP, Adult-Gerontology NP and Psychiatric-Mental Health NP Specialty Tracks.

[Chamberlain University Nursing | Chamberlain St. Louis](#)

Join The Nation's Largest Nursing School With Degree Programs Including BSN, MSN And More. Pursue a Degree at Chamberlain University: With Over 130 Years of Academic Excellence.

[Chamberlain University® DNP | Doctor of Nursing Practice](#)

Become a leader to help drive the transformation of healthcare quality and patient safety. Ready to take your nursing career to the next level? Earn Your DNP in as few as 2 years.

Non Brand

[Chamberlain University Nursing | No Prerequisites Required](#)

Join the Largest Nursing School in the Country and Over 100K Alumni Who Chose Chamberlain.

[No GRE or Entrance Exams Req. | USA's Largest Nursing School](#)

If You're Looking To Take The Next Step In Your Nursing Career, You Belong At Chamberlain.

[Chamberlain University Nursing | No Prerequisites Required](#)

Step Forward to Serve Your Community! Earn Your BSN in 3 Yrs from Chamberlain University®. Join the Largest Nursing School in the Country and Over 100K Alumni Who Chose Chamberlain.

[Master of Public Health | MPH in as few as 4 Semesters](#)

If You're Looking To Take The Next Step In Your Nursing Career, You Belong At Chamberlain. It Takes Great Nurses To Make Great Nurses. Prepare For What's Next In Your Career Today.

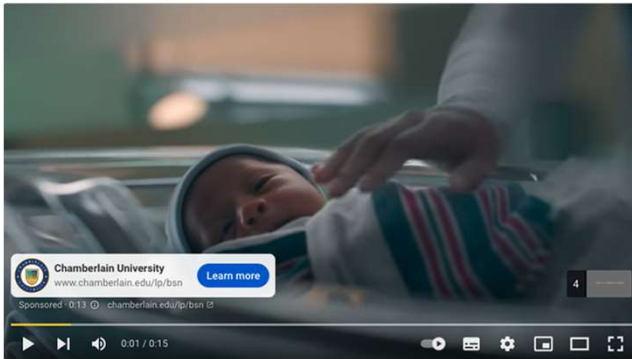




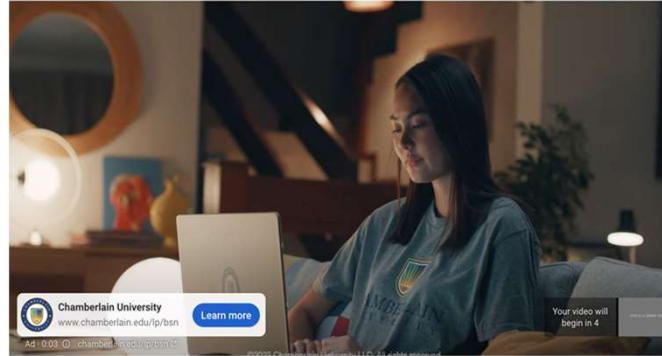
Pre-Roll Online Videos

BSN and MSN YouTube Consideration

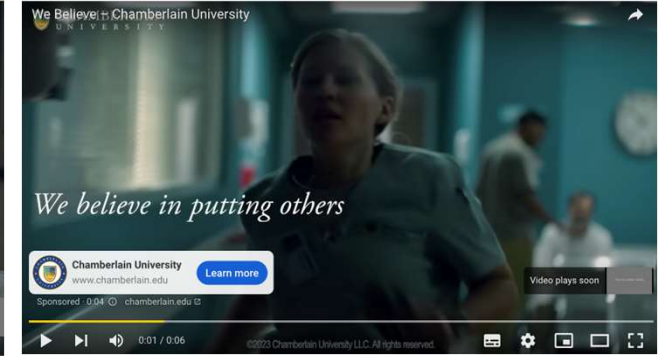
BSN Changes Lives



BSN Flexibility



Generic - Others



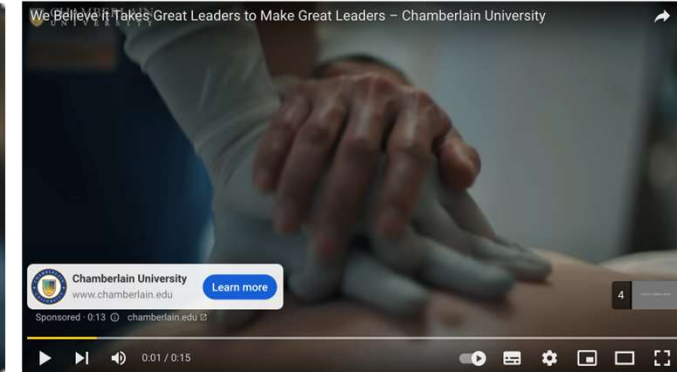
MSN –Pass it On



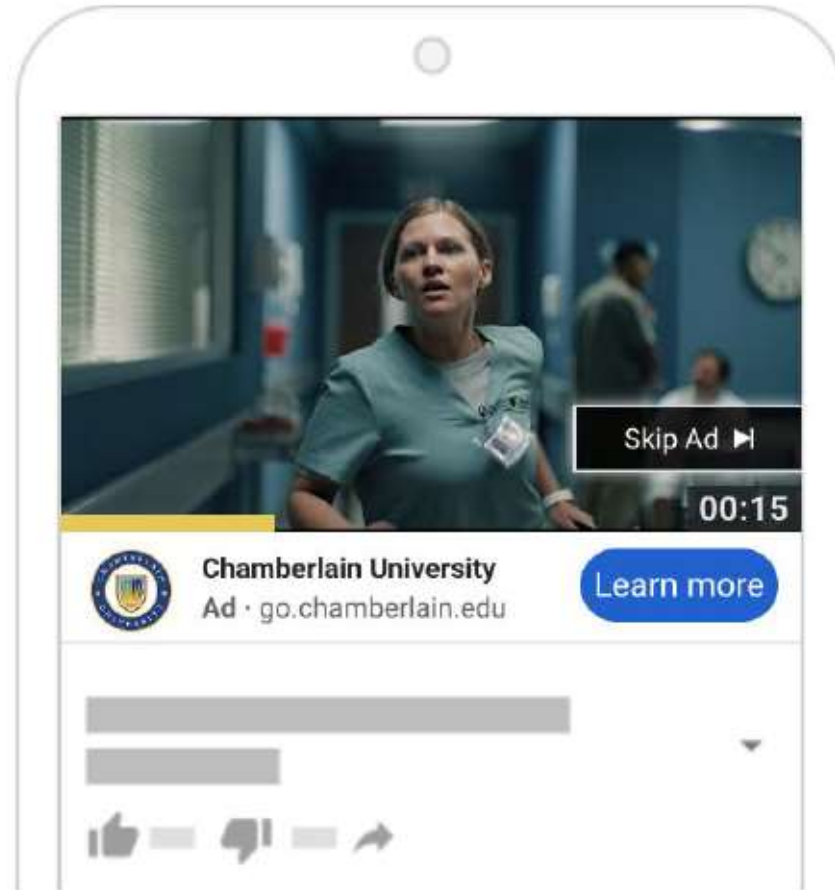
MSN – Greater Impact



MSN – Great Leaders




MSN



Skip Ad ▶

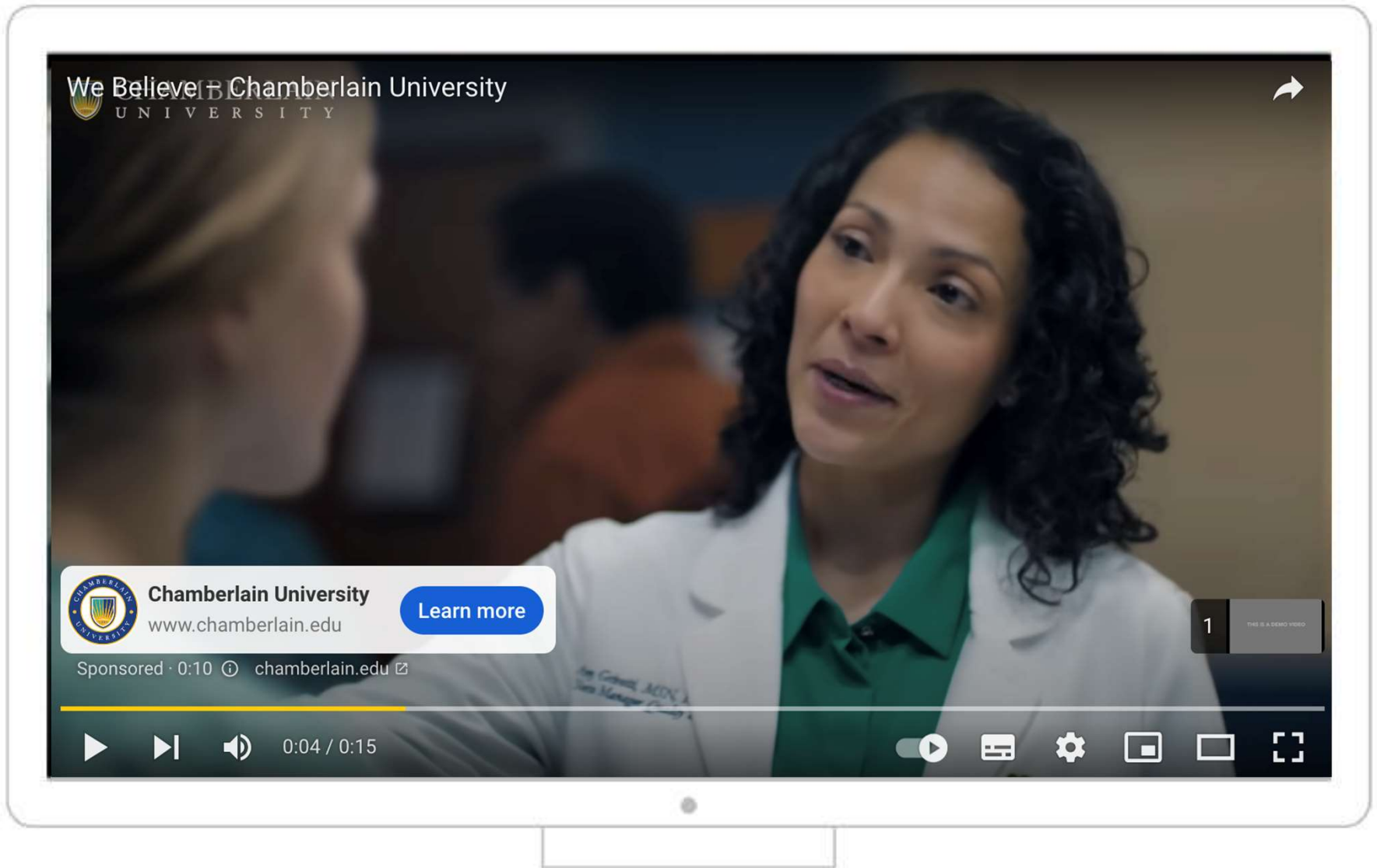
00:15

 **Chamberlain University**
Ad · go.chamberlain.edu [Learn more](#)

*BTSG (Belong to Something Greater)-
Called to Do More*



Generic OLV (Online Video/social)



We Believe (15s)



Video/Teads Live Examples (video viewed in news brands and publishing content)

CNN.com

File Edit View History Bookmarks Desktop Window Help


www.cnn.com

CNN BUSINESS Markets Tech Media Success Perspectives Video Audio Live TV Log In

"The cost-of-living crisis means families and children across our city are in desperate need of additional support," says Khan, who himself received free school meals as a child, said in a statement Monday.

The £130 million (\$155 million) program will run for the academic year starting in September and aims to help around 440,000 (£520) per child. It will also help reduce the "stigma that can be associated with being singled out as low income," the statement added.

ADVERTISEMENT



CHAMBERLAIN UNIVERSITY BELONG TO SOMETHING GREATER

LEARN MORE

A quarter of all London pupils, including those in high school, already qualify for free school meals according to national criteria largely based on household income, according to official data.

The new program is expected to help around 270,000 pupils who are not currently eligible, according to estimates by researchers for the city government.

This number falls well short of an estimate by the Child Poverty Action Group that about 230,000 children living in poverty in London don't qualify for free school meals because the eligibility criteria are "too restrictive".

lendingtree

Mortgage

Loan Type	Rate	APR
30-yr Fixed	3.89%	5.88%
15-yr Fixed	4.70%	6.67%
5/1 ARM	3.89%	5.22%
Loan Amount	APR	Payment
\$100,000 (24.58%)	5.22%	\$5,247.00/mo
\$200,000 (24.58%)	5.22%	\$10,494.00/mo

calculate payment

Businessinsider.com

10:21

www.businessinsider.com

HOME PAGE

SEVENFEEL FEELS

While the focus right now is on Susan Wojcicki — who announced that she was stepping back from her role as YouTube's longtime CEO on Thursday — her younger sister Anne, is a tech industry veteran in her own right.

ADVERTISEMENT



CHAMBERLAIN UNIVERSITY BELONG TO SOMETHING GREATER

LEARN MORE

Anne Wojcicki co-founded the genetic testing company 23andMe in 2006, and took the company public in June 2021 through a merger with a special purpose acquisition company. 23andMe currently has a market capitalization of around \$1.3 billion, according to Yahoo Finance.

[Video with Skin :15s](#)

[Video with Skin :30s](#)

[Video with Skin :06s V1](#)

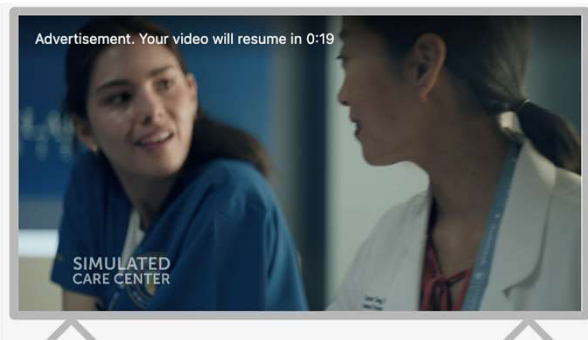
[Video with Skin :06s V2](#)



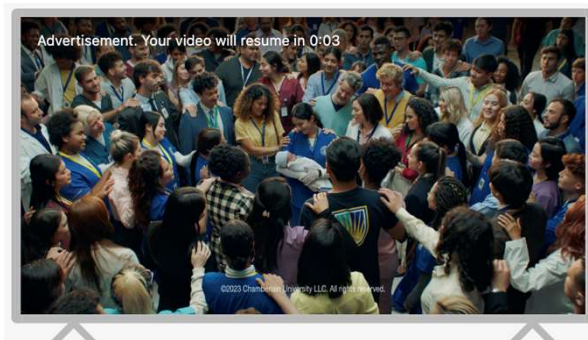


Social Ads

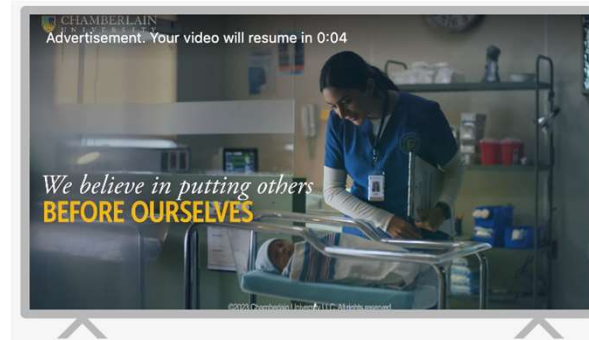
Awareness LinkedIn CTV



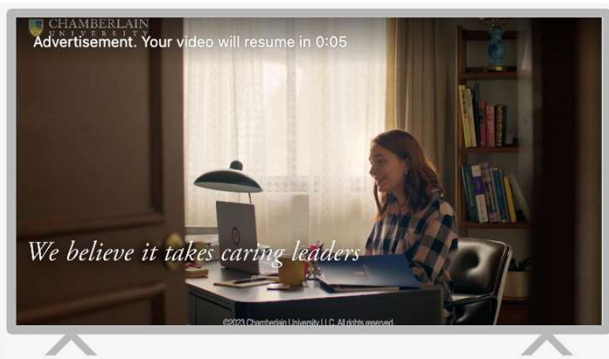
We Believe 30s



Same Calling 6s



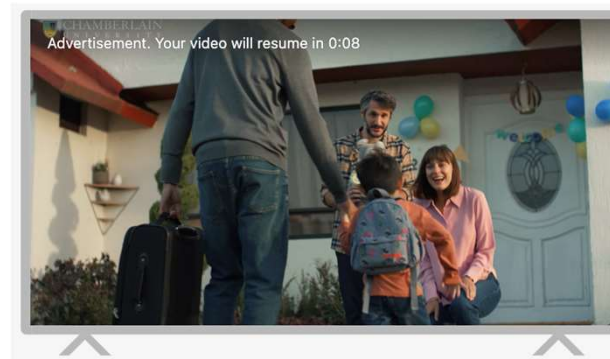
Others 6s



Leaders 6s



We Believe 6s



We Believe 15s



Social OLV

<p>Ad Name: Video_HO_BTSG_AllConnected_30s Preview Link: https://fb.me/1KM4hJRldzAGmHV</p>	<p>Ad Name: Video_HO_BTSG_AllConnected_15s Preview Link: https://fb.me/1Tef1f4PKDaAHNs</p>	<p>Ad Name: Video_HO_BTSG_SameCalling_6s Preview Link: https://fb.me/1KIY1xqbmAVJOp5</p>	<p>Ad Name: Video_HO_BTSG_MakingLivesBetter_6s Preview Link: https://fb.me/1PcTefSaD7dJUMM</p>
--	--	--	--

Ad Name: Video_HO_BTSG_SameCalling_6s
Preview Link: [Preview Link](#)

Ad Name: Video_HO_BTSG_MakeLivesBetter_6s
Preview Link: [Preview Link](#)

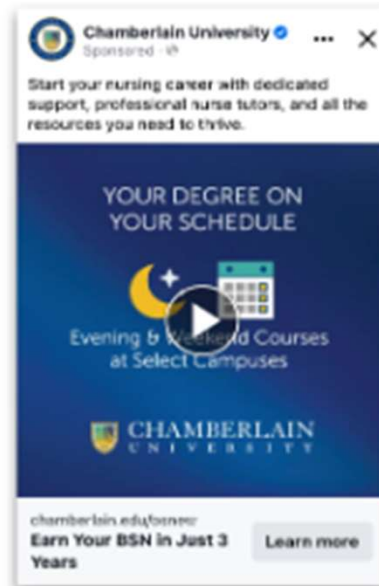
Ad Name: Video_HO_BTSG_AllConnected_30s
Preview Link: [Preview Link](#)

Ad Name: Video_HO_BTSG_AllConnected_15s
Preview Link: [Preview Link](#)

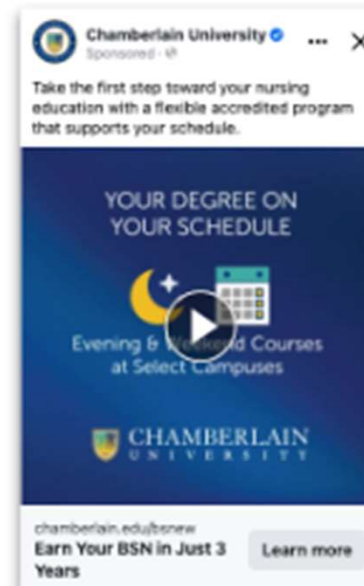


Evening & Weekends (BSN Conversion)

Paid Social

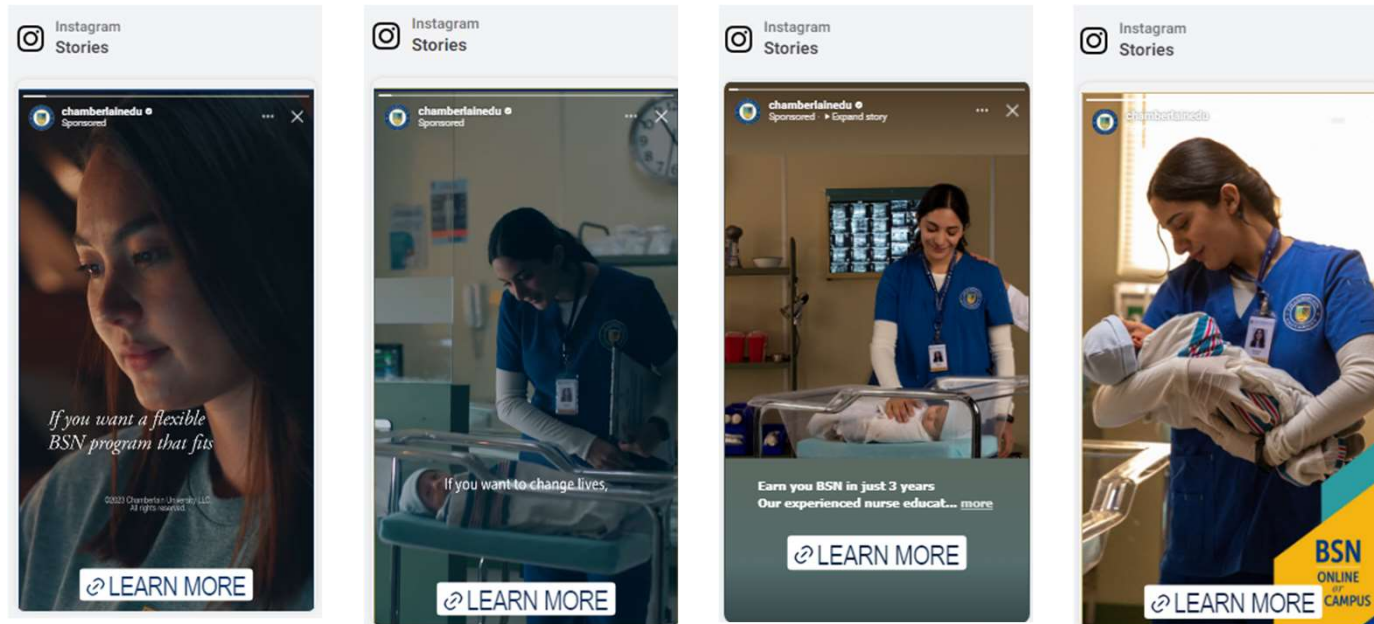


Messaging:
GIF BSN EW V5



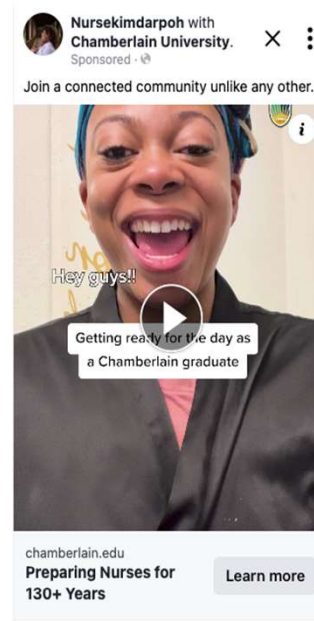
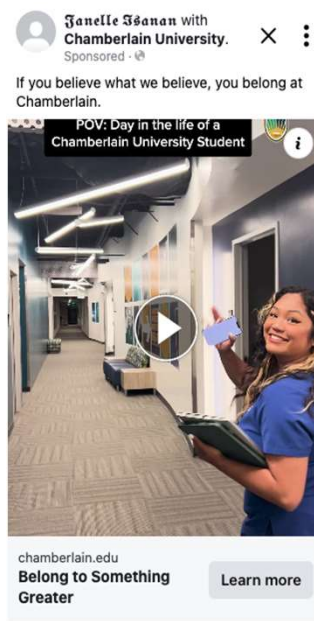
Messaging:
GIF BSN EW V6

BSN (Conversion) Meta Ads continued Reels/stories Paid Social



Tik Tok and Meta ASC Partnership Ads

BSN and MSN current and former students targeted at the prospective audience



BSN

MSN

*BTSG (Belong to Something Greater)-
Making Lives Better*



ASC (Advantage Shopping Campaign, Conversion) Meta Ads Paid Social

Chamberlain University Sponsored

If you want to change lives, starting with yours, earn your BSN in just 3 years.

BSN
Online or On Campus

chamberlain.edu
Online or On Campus
Earn your BSN in just 3 ...

Learn more

ASC Static

Chamberlain University Sponsored

Find out why nurses choose Chamberlain. Explore our online programs and options including: RN-BSN, 9 MSN Specialties or DNP.

BSN
Online or On Campus

Online or On Campus
Earn your BS...

Learn more

ASC Carousel

Chamberlain University Sponsored

Transfer qualifying credits and get a head start on your BSN degree at one of our two Atlanta locations

Earn Your BSN
Your Journey in Nursing Begins Here
2 ATLANTA LOCATIONS

go.chamberlain.edu
Earn a BSN in Just 3 Years

Learn more

ASC Static

Chamberlain University Sponsored

Prepare for your nursing career at the nation's #1 educator of nursing students. Explore one of our 23 campus locations.

Earn Your BSN
Your Journey in Nursing Begins Here
2 ATLANTA LOCATIONS

Earn a BSN in Just 3 Years
Enroll Now

Learn more

Transfer relevant Classes

ASC Carousel

DABA (Dynamic Ads for Broad Audiences, Conversion) Meta Ads Paid Social

Chamberlain University Sponsored

Join the nation's largest school of nursing, where we lift you up so you can earn your BSN in just 3 years.

BSN
ONLINE
OR ON CAMPUS

go.chamberlain.edu
Belong to Something Greater

Learn more

DABA Static

Chamberlain University Sponsored

Find out why nurses choose Chamberlain. Explore our online programs and options including: RN-BSN, 9 MSN Specialties or DNP.

BSN
ONLINE
OR ON CAMPUS

Belong to Something Greater
Earn your B...

Learn more

Online, your RN to E

DABA Carousel

Chamberlain University Sponsored

Start nursing classes in year one with direct-entry into the BSN program at our North Brunswick campus.

Earn Your BSN
Your Journey in Nursing Begins Here
NORTH BRUNSWICK CAMPUS

go.chamberlain.edu
Evening/Weekend Options

Learn more

DABA Campus Static

Chamberlain University Sponsored

Start nursing classes in year one with direct-entry into the BSN program at our North Brunswick campus.

Earn Your BSN
Your Journey in Nursing Begins Here
NEW ORLEANS CAMPUS

LPN/LVN proficiency Nursing Sch...

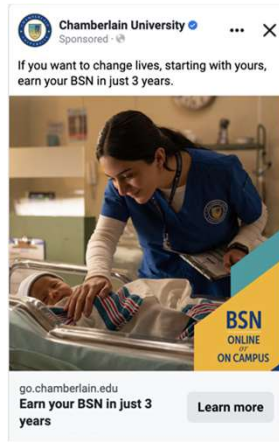
Learn more

Evening/Weekend Options

DABA Campus Carousel



BSN (Conversion) Meta Ads Paid Social



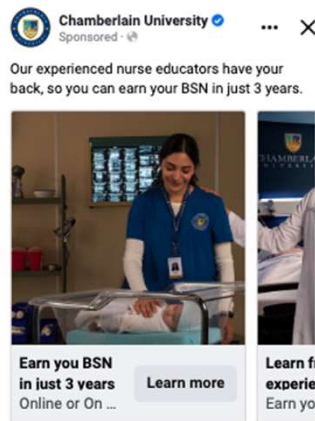
Messaging:
BTSG Static Variation B



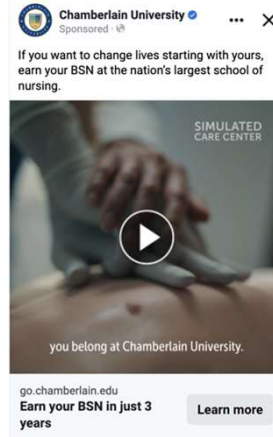
Messaging:
BTSG Static Var A1



Messaging:
BTSG Static Var A2



Messaging:
BTSG Carousel



Messaging:
Changing Lives 15s Video



Messaging:
Changing Lives 6s Video



LinkedIn Conversion/Conversation Ads

Chamberlain University

Sponsored Jan 23

Chamberlain University · 9:06 PM
Hi Jennifer,

Based on your profile, we think you'd be a great fit for our online Bachelor of Science in Nursing (BSN) program. Chamberlain University offers the flexibility you need to earn your BSN and accommodate your busy schedule.

Are you a Registered Nurse?

[Yes](#) [No](#)

REGISTERED NURSES:
*Earn your **BSN** in as little as 1 year*

100% ONLINE COURSEWORK


Classes begin: **MAR. 4**

[Learn More](#)

CHAMBERLAIN UNIVERSITY
BELONG TO SOMETHING GREATER™

Grow Your Network with Premium

Premium InMail is 4.6x more effective in hearing back than cold email.

 Shannon and millions of other members use Premium

[Retry Premium for \\$0](#)

1-month free trial. Cancel anytime.

Chamberlain University

Sponsored Oct 26

Chamberlain University · 2:28 PM
Hi Jennifer,

Based on your profile, we think you'd be a great fit for our online Master of Social Work (MSW) program. Chamberlain's MSW program focuses on developing exceptional social work professionals who maintain a passion for advancing human rights and social, economic and environmental justice.

Learn more by selecting the category that you'd like to learn more about within our MSW program.

[Learning Tracks](#)

[Program Length](#)

[No GRE Required](#)

[Tuition Savings](#)

[Advanced Standing Option](#)

*Earn your **MSW** in as few as 2 years*

100% ONLINE COURSEWORK

Classes begin: **OCT. 30**

[Learn More](#)

CHAMBERLAIN UNIVERSITY
BELONG TO SOMETHING GREATER™

About Accessibility Help Center
Privacy & Terms Ad Choices
Advertising Business Services
Get the LinkedIn app More

[LinkedIn](#) LinkedIn Corporation © 2023

Chamberlain University

Sponsored Oct 26

Chamberlain University · 2:25 PM
Hi Jennifer,

Based on your profile, we think you'd be a great fit for our online Master of Public Health (MPH) program. Chamberlain's MPH program is designed to challenge and change the way you think about the health of population groups, while preparing you to lead projects and teams that implement solutions for a diverse range of public health programs and policies.

Learn more by selecting the category that you'd like to learn more about within our MPH program and download our MPH infographic.

[Coursework](#)

[No GRE Required](#)

[Tuition Savings](#)

[Accelerated Study Option](#)

[Learn More](#)

*Earn your **MPH** in as few as 4 semesters*

100% ONLINE COURSEWORK

Classes begin: **OCT. 30**

[Learn More](#)

CHAMBERLAIN UNIVERSITY
BELONG TO SOMETHING GREATER™

About Accessibility Help Center
Privacy & Terms Ad Choices
Advertising Business Services
Get the LinkedIn app More

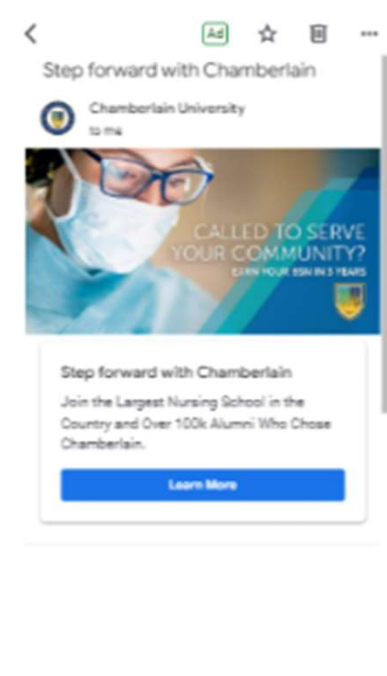
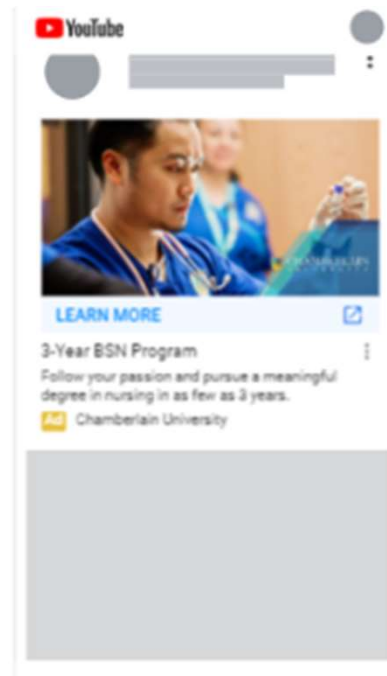
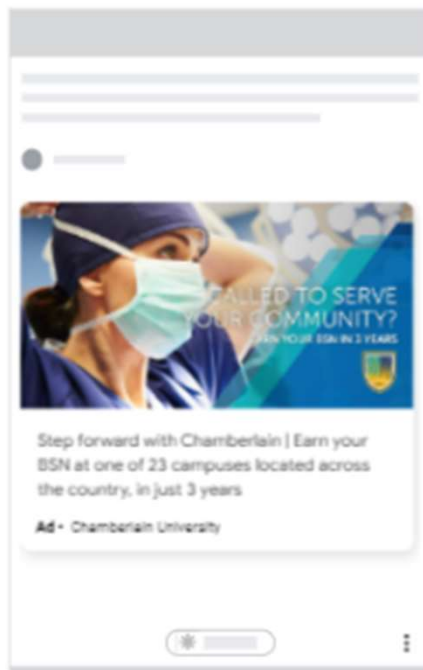
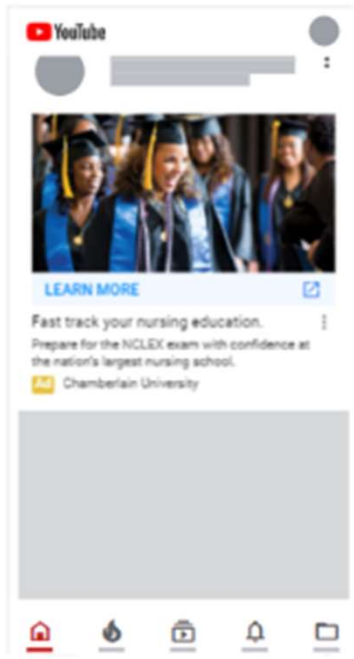
[LinkedIn](#) LinkedIn Corporation © 2023





Display Ads

BSN Discover (Display)



MSN NP (Display)

Example of your image ad at 300x250



Enhance your education



Expand the scope of your practice and become a Nurse Practitioner.



Example of your text ad at 300x250

Enhance your education

Chamberlain University

Expand the scope of your practice and become a Nurse Practitioner.

LEARN MORE

Example of your native ad at 300x250

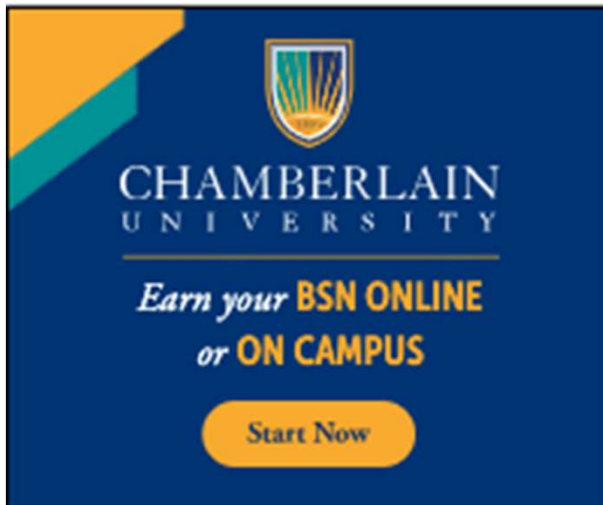


Become a Nurse Practitioner and enhance your nursing...

Chamberlain University

Learn More >

BSN Display Statics



BSN Call to Help



We Believe - MSN



BSN We Believe



We Believe - RN-BSN



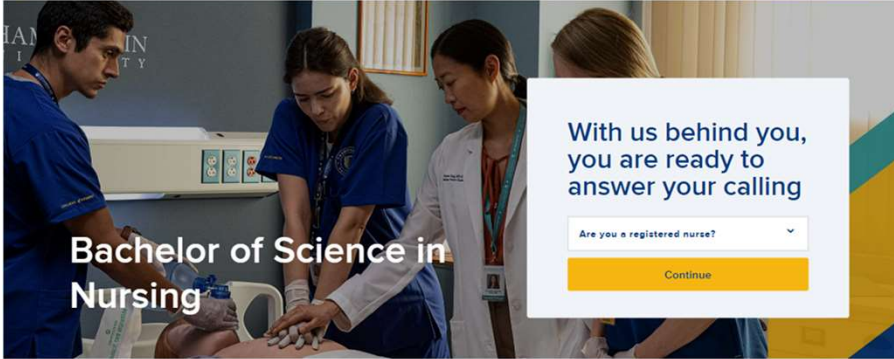


SECTION 2:
WEBSITE LANDING PAGES

BSN

CURRENT STUDENTS | INFORMATION FOR | CHAT | 877.751.5783

CHAMBERLAIN UNIVERSITY | Programs | Admission | Financial Aid | Why Chamberlain | [Apply](#) | [Request More Info](#)



Bachelor of Science in Nursing

With us behind you, you are ready to answer your calling

Are you a registered nurse?

[Continue](#)

[Overview](#) | [Curriculum](#) | [Admissions](#) | [Tuition](#) | [Find a Campus](#) | [Accreditation](#)

Earn your BSN degree in just 3 years.



Next Start Date | Sept 04

[Request Information](#)

Bachelor of Science in Nursing Program

Prepare for your nursing career

At Chamberlain, you'll gain the hands-on experience, mentorship and critical thinking you need to become a nurse who demonstrates both competence and compassion. Get support at every step of the BSN program:

- Enter directly into our BSN nursing program, with no waitlist* at most of our 20+ campus locations or through our BSN Online Option
- Apply for scholarship and grant opportunities. Financial aid in the form of federal and private loans, scholarships, grants and work-study is available to those who qualify
- Finish faster by transferring qualifying credits from previous degree work

*Irwindale, New Orleans, Las Vegas, Sacramento, North Brunswick and San Antonio campuses may have a waiting period.

BSN Program Details

Complete in: As few as 3 years

Next BSN Start Date: Sept 04

Accreditation: CCNE

Locations: [Campuses](#)

[Request Information](#)



Join the (Extraordinary Nurses) Club

An inclusive nursing BSN community

By attending the largest pre-licensure Bachelor of Science in Nursing program in the country, you'll join a network of nurses who step forward to support each other – and their patients. Earn a BSN degree you can be proud of. Contact our admissions team to learn more.

- Be among more than 113,000 students and alumni nationwide
- Attend a CCNE accredited nursing school, with more than 130 years of history educating nurses



Ask a Student

What's the difference with a Chamberlain nurse or Chamberlain as a nursing school?

"I interviewed for three jobs, and I was offered three positions. Each interviewer told me specifically that they had had really good experiences with Chamberlain-prepared graduates. It's important to know that your degree is respected in your community."



Meris

'21 BSN student, Columbus Campus



Prepare to be a Confident Nurse

A hands-on BSN program

Gain the skills and confidence you need to provide the highest quality of care to your patients in Chamberlain's BS Nursing program.

You'll start taking nursing classes on Day 1, with a focus on critical thinking and translating theory into practice. Some of your classes will be online. After you hone your nursing practice and caregiving skills in our labs, you'll be ready for clinicals.

[Request Information](#)



Small Class Sizes

Learn from instructors invested in your success, and who provide individualized support.



SIMCARE Center & Nursing Skills Labs

Practice nursing skills and receive feedback in a safe, simulated environment before you treat a patient.



Clinical Experience

Care for your first patients in diverse health care settings, with an experienced nursing BSN instructor by your side.



Entry-Level BSN Program

The direct entry BSN program is designed for you to complete your general education requirements and nursing courses at the same time. This means you can start taking nursing courses as soon as your first semester. See the full BSN curriculum plan.



BSN

3 Ways to Become An RN in Just 3 Years

Online

Offers the optimal blend of flexibility, interactivity and experiential learning.

- ✔ 100% online coursework
- ✔ Classes during weekdays
- ✔ Virtual simulation and lab experiences
- ✔ In person skills check-off prior to clinical rotations
- ✔ Clinicals occur during the last two weeks of a session and may require travel

Visit the [BSN Online](#) page to learn more.

[Request Information](#)

Campus Hybrid

Presents the best of both worlds by offering traditional and online learning experiences.

- ✔ In person and online coursework
- ✔ Classes during weekdays
- ✔ In-person and virtual lab experiences
- ✔ Clinicals occur once a week

* Exceptions may occur in the hybrid standardized course delivery model by a specific campus location.

[View Locations](#)

Evening-Weekend

Provides the option to attend in person classes during the evenings and weekends.

- ✔ In person and online coursework
- ✔ Classes in the evenings and weekends
- ✔ In person and virtual lab experiences
- ✔ Clinicals occur once a week

* Evening and weekend option is available in select markets. Visit the locations page to see if available where you live.

[View Locations](#)

Nursing BSN Clinical FAQs

Where will I complete my nursing school clinicals?

When do I participate in clinicals if I attend at campus location?

What are some examples of clinical nursing courses?

When do I participate in clinicals if I attend BSN Online?



Still have questions?
Let us help you.

Request information to connect with an admissions representative.

Take the first step toward earning your BSN degree.

Are you a registered nurse?

Yes

No

Highest Degree Earned

What year did you graduate?

[Next](#)

Your Nursing School Support System

You're never alone at Chamberlain

The road to earning a BSN degree isn't always smooth – and it's important to know you have a strong support system to partner with you on your good days and bad.

You can feel confident everyone shares the same goal at Chamberlain - to see you succeed as a nurse. Our 130+ years of educating nurses means have experience in delivering the support systems you need to complete your BSN and prepare you to take the NCLEX.

We're with you every step of the way.

[Request Information](#)



Center for Academic Success

Take your comprehension to the next level with workshops, tutoring, NCLEX® prep – and much more



Ask a Student

What is campus life like?

"There was always an opportunity to join an organization on campus, and they did a really good job of including everyone and making their presence known. I thought it was great. There was always something going on."



Jesse

'21 BSN student, Houston Campus

A Toolbox for Your Road to Registered Nurse

Leverage resources dedicated to your academic success

Ask a Chamberlain BSN student their secret to success and you're likely to hear a common response: they take advantage of all the resources available to support their nursing BSN journey.



Academic Support

Take advantage of group course content review sessions or one-one-reviews led by content experts. Ask questions of other BS nursing students, or spend time with an expert going through a recent test to truly understand questions you might have missed.



NCLEX-RN® support through ATI Nursing Education

The NCLEX-RN® Exam is too important to cram for. You'll start to prepare during your courses, with access to tutorials, assessments, practice tests and comprehensive support and planning tools. All are integrated into your BS in nursing curriculum so you feel confident on exam day.



Virtual simulations through i-Human Patients (IHP)

As a nurse, your patient encounters will require you to perform a history, identify and prioritize issues and interventions, and much more. When you care for a virtual i-Human patient, you'll get experience with these skills in a safe environment as you work towards your bachelor's degree.



BSN

BSN Nursing Program Locations

Attend a BSN program that works with your life

On Campus

Earn your BSN degree at one of 20+ campus locations across the United States.

AZ - Phoenix	MO - St. Louis
CA - Irwindale	NV - Las Vegas
CA - Sacramento	NJ - North Brunswick
FL - Jacksonville	NC - Charlotte
FL - Miramar	OH - Columbus
GA - Atlanta	TX - Houston
IL - Addison	TX - Irving
IL - Chicago	TX - Pearland
IL - Tinley Park	TX - San Antonio
IN - Indianapolis	VA - Tyson's Corner
LA - New Orleans	BSN Online Option
MI - Troy	Clinical in select states



Online

Combine 100% online classwork with on-site clinical rotations at our partner locations. Check to see if BSN Online is available in your state. [Learn more.](#)

Evening & Weekend Option

Attend nursing school on nights and weekends, and still earn your bachelor's degree in as few as three years on our Addison, Atlanta, Chicago, Houston, Irving, North Brunswick, Pearland, Phoenix, Troy and Tyson's Corner campuses.

Campus Hybrid

Combine the benefits of online and on campus learning. Fewer hours commuting to and attending campus classes means you get time back – for however you want or need to spend it. Available at most Chamberlain campuses.

Take a Peek Around Campus

Chamberlain is ready to welcome you to one of our 20+ campus locations. You can feel confident that everyone shares the same goal at Chamberlain - to see you succeed as a nurse. Our 130+ years of educating nurses means we have experience in delivering the support systems you need to complete your BSN and prepare you to take the NCLEX.



BSN Program Admission Requirements

How do I get started?

New students can enroll at Chamberlain up to six times per year, with no prerequisite courses required for admission.

For your nursing application, you should:

- Submit a completed Application for Admission located at [chamberlain.edu/apply](#)
- Submit a \$95 non-refundable* application fee payable to Chamberlain University
- Schedule an interview with the admission representative
- Request official transcripts from all previously attended institutions
- Schedule and complete the HESI Admission Assessment (A2)

To view all requirements, review the Undergraduate Admission section of the [catalog](#)

*Not all locations require an application fee. Visit the [location page](#) for your campus to learn more.



You're more than just an application or a test score.

If you fall below our academic eligibility requirements, our admissions committee will still consider whether you can be successful in our BSN program.

[Request Information](#)

What happens after I apply?

Your application will be sent to the admission committee. If accepted into Chamberlain, you will need to initiate drug, background and fingerprint screenings and either clear all screenings within 120 days of the session start date or sign a self-attestation and disclosure indicating their ability to clear all screenings within 120 days of the session start date before the applicant is granted acceptance.

Chamberlain Welcomes Transfer Students

Your BSN degree is closer than you think

Whether you have a bachelor's degree in another field, or have just taken a few classes at the college level, you may be able to earn your BSN degree even faster as a transfer student than the typical three years of year-round study.



Bachelor's Degree in Another Field*

Thinking of switching to a more meaningful career where you can serve others, or a fresh start in a fresh-growing field? Chamberlain is here to help you achieve it as quickly as possible - [request more information](#) to learn more. You'll have access to:

- Tailored academic advising that leverages your past education for your future nursing career
- A six-session "university seminar" that will help you transition seamlessly back to your education

*Applicants for the Tyson's Corner campus must provide a high school/equivalency transcript documenting proof of graduation.



Transfer Students

We welcome transfer students, and encourage you to plan ahead. Here's how to get started:

1. [Review the full BSN nursing transfer credit requirements.](#)
2. [Contact admissions](#) to have your credit evaluation started - this will give you a full picture of what credits will transfer.

Tuition & Expenses

Your Nursing School Investment

Earning your BSN degree is a significant investment, and one of the most important ones you will make. [View more information about tuition & expenses for our BSN program.](#) Get support as you navigate paying for your nursing education.

- 🕒 More than 90% of Chamberlain students receive some form of financial aid.
- 🔍 Check out our [Net Price Calculator](#) for an estimate of federal and institutional aid, or contact admissions, who can help you find a plan that fits your budget.
- 📄 View our [Tuition & Expenses Grid](#) and [Total Cost Calculations](#) for the BSN program.

If you fall below our academic eligibility requirements, our admissions committee will still consider whether you can be successful in our BSN program.



Need help in creating a financial plan for your BSN nursing program?

We're here to help. Contact our admissions team to discuss your financial options.

[Request Information](#)

BSN Scholarship & Grant Opportunities

Explore a wide range of scholarships and grants available to Chamberlain BSN program students.

View all nursing BSN grant and scholarship opportunities.



Catalyst Grant
\$1000 per session (up to \$5,000)



Empower Scholarship Fund
Awards range from \$1,000 - \$5,000



Navigate to Nursing Scholarship
Available funds vary by location

BSN

Chamberlain Bachelor of Science in Nursing FAQs

Explore frequently asked questions

- Does Chamberlain have an LPN to BSN or LVN to BSN program? ▾
- Does Chamberlain accept transfer credits? ▾
- How much is the BSN program at Chamberlain? ▾
- Is Chamberlain University accredited? ▾

Become a Nurse

Answer the call to step forward

If you're here, exploring a bachelor's degree in nursing, then you've felt it - the calling to help people at their most vulnerable and to step forward to care for patients and families. Here are a few more reasons we feel it's a rewarding path:

- 🕒 Nationwide nursing shortage of nearly half a million nurses projected by 2030
- 🗳️ Rated the most honest, ethical profession for the past 18 years by a [Gallup Poll](#)
- 🔄 A career with options, from diverse practice settings to schedules to career paths

Take the first step towards a fulfilling nursing career - [contact admissions today](#).



BSN Program FAQs

Still have questions? Our admissions team is here to help.

- What is a BSN degree? ▾
- What is the difference between RN and BSN? ▾
- What is the difference between ADN and BSN? ▾
- How long is nursing school? ▾

Accreditation? Check.

Earn a BSN degree from a proudly accredited institution.

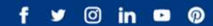
In addition to a university accreditation from the [Higher Learning Commission \(HLC\)](#) and multiple program accreditations from the [Commission on Collegiate Nursing Education \(CCNE\)](#), Chamberlain continuously earns new approvals from respected agencies across the nation.

For a complete list, check out our [authorizations](#) or view our [approvals in your state](#).



Student Portal Login

- Main Campus
- Addison Campus
- 1221 North Swift Road
- Addison, IL 60101
- National Management Offices
- 500 W. Monroe St, Suite 1300
- Chicago, IL 60661
- All Campus Locations
- Contact
- Online Programs
- Master of Physician Assistant Studies
- Alumni Association
- Chamberlain Marketplace
- Military
- Leadership
- Catalog & Viewbook
- Student Portal
- Student Consumer Info
- Accreditation
- Parent Organization
- CA Performance Fact Sheets
- CA BPPE Annual Report
- CA BPPE Website
- Cost of Attendance
- Careers
- Privacy Policy
- Online Cookie Policy
- Sitemap
- Terms of Use
- Accessibility
- Student Disability Services
- Office of Equity and Access



2023 Chamberlain University LLC. All rights reserved.

[Online Cookie Policy](#) [Privacy Policy](#) [Sitemap](#) [Terms of Use](#)

**140,000 Chamberlain students, alumni and faculty

*Chamberlain University is accredited by the Higher Learning Commission (www.hlcommission.org), an institutional accreditation agency recognized by the U.S. Department of Education. The baccalaureate degree program in nursing, master's degree program in nursing, Doctor of Nursing Practice program and post-graduate APRN certificate program at Chamberlain University are accredited by the Commission on Collegiate Nursing Education, ccneaccreditation.org. The Chamberlain University Doctor of Nursing Practice (delivered via distance education) is accredited by the National League for Nursing Commission for Nursing Education Accreditation (NLN CNEA) located at 2600 Virginia Avenue, NW, Washington, DC 20037 (202-909-2526). Chamberlain University's Master of Public Health Program is accredited by the Council on Education for Public Health, www.ceph.org. For the most updated accreditation information, visit chamberlain.edu/accreditation. Chamberlain University's Master of Social Work degree program is accredited by the Council on Social Work Education's Commission on Accreditation, www.cswe.org. The Accreditation Review Commission on Education for the Physician Assistant, Inc. has granted Accreditation-Provisional status to the Chamberlain University Physician Assistant Program.

Certified to Operate by SCHEV.

To report unresolved complaints to the Illinois Board of Higher Education visit their webpage at <https://complaints.ihbe.org/> or by mail to 1 N. Old State Capitol Plaza, Suite 333, Springfield, IL 62701-1377. View Chamberlain's complaint process.

Chamberlain University confers online degrees from its Main Campus in Addison, IL.

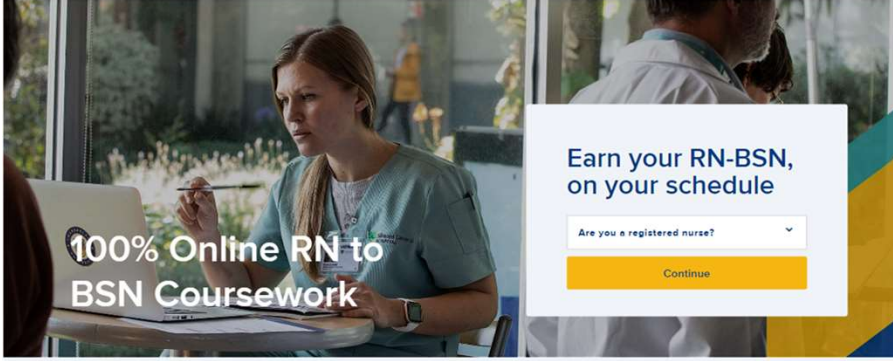
Chamberlain University is a member of Adtalem Global Education Inc. www.adtalem.com
©2023 Chamberlain University LLC. All rights reserved.



RN to BSN

CURRENT STUDENTS | INFORMATION FOR | CHAT | 877.751.5783

CHAMBERLAIN UNIVERSITY | Programs | Admission | Financial Aid | Why Chamberlain | [Apply](#) | [Request More Info](#)



Earn your RN-BSN, on your schedule

Are you a registered nurse?

[Continue](#)

100% Online RN to BSN Coursework

[Overview](#) | [Curriculum](#) | [Admission](#) | [Tuition](#) | [Accreditation](#) | [FAQs](#)

Go from RN to BSN in as Little as 1 Year



Next Start Date | Sept 04

[Request Information](#)

Why More Nurses Choose Chamberlain's RN to BSN

If you're a registered nurse, earn your Bachelor of Science in Nursing degree in as little as one year at Chamberlain. As the country's largest nursing school, you'll join a strong network of extraordinary nurses to prepare for the next step in your nursing career with:

- Faculty with Real-World Experience**
We've been educating nurses for over 130 years – and it shows. Learn from supportive, master's or doctoral-educated faculty who teach from their own healthcare experience.
- Education That Fits with Your Life**
The RN to BSN program is designed to fit around your schedule and life -- with no mandatory log-in times and 100% online coursework.
- Relentless, Personalized Support**
From your first call with admissions, until after you've earned your degree, we are your partner in helping you achieve your goals.
- Savings Up to 47% on Tuition – a Value of \$12,550**
Our team works with you to create a financial plan - savings can vary based on transcript evaluations, grant eligibility and group specific tuition rates.

RN to BSN Details

Complete in: 1 year*

Next Start Date: Sept 04

Coursework: 100% online

Accreditation: CCNE

*With full-time enrollment

[Request Information](#)

Flexibility to Fit Your Life

100% online coursework that fits around your busy schedule

As a busy, working nurse, you need an RN to BSN program that meets you where you are. Chamberlain's RN to BSN online program is designed by nurses, for working nurses – and with over 130 years of experience in nursing education, we've gotten pretty good at understanding and meeting the diverse needs of our students.

Here's a few examples of what that might look like:

- Full-Time**
You can earn your BSN in just one year. You'll take 2-3 courses per eight-week session.
- Part-Time**
Nervous about going back to school? Take one course to start and see how it goes. Add in additional classes when you're ready - you have maximum flexibility in Chamberlain's RN to BSN online program.
- One Class at a Time**
If you're an RN who hopes to take maximum advantage of employer reimbursement contributions, or you'd just like to take things slower, you can earn your BSN one course at a time. Online RN to BSN courses are offered every 8 weeks.

You can choose to attend full-time or part-time, whichever works for your schedule – and you're not locked into either if you're ready to move faster or slower through the online RN to BSN program, request information to learn more.

[Request Information](#)



Choosing between programs?

Explore the differences between BSN, MSN and accelerated MSN options

RN-BSN Option

BSN curriculum, 100% online coursework that fits your busy schedule.

Good for Nurses who

- Value Flexibility
- Want to finish in 3 semesters
- Want control over studying pace
- Have an active RN license

Details

- BSN degree earned
- No Specialization
- Receive 77 proficiency credits

[Request Information](#)

RN-BSN to MSN

Enables RNs to advance their education and careers while being cost and time effective

Good for Nurses who

- Value efficiency
- Want to finish in 8 semesters
- Want two degrees with specialization
- Have an active RN license

Details

- BSN and MSN Degree Earned
- 9 MSN specialty tracks
- Receive 77 proficiency credits

[Learn More](#)

RN-MSN Accelerated

RNs advance their degrees without getting bogged down by prerequisites.

Good for Nurses who

- Value expediency
- Want to finish in 4 semesters
- Achieved at least a 3.0 GPA
- Have an active RN license

Details

- MSN Degree Earned
- Clinical Nurse Leadership Option
- No proficiency credits needed

[Learn More](#)

Go from RN to BSN online and on your time, apply to Chamberlain to start the next step in your career.

[Apply Free Today](#)

Application fee waiver not permitted in Georgia



RN to BSN

A Practice-Focused Curriculum

Ready to take your nursing education to the next level? Our online RN to BSN program is designed to help improve your nursing skills in the healthcare setting.

[See Full Curriculum Plan](#)



Comprehensive

Take a deep dive into topics from community-based health issues, like disaster planning or at-risk population services, to leadership for the professional nurse.



Interactive

Enrich your nursing practice through discussion with fellow students from diverse clinical and personal backgrounds.



Practical

Apply what you're learning directly and immediately - you'll be learning from nurse educators with rich experience in a variety of healthcare settings.

RN to BSN Curriculum FAQ

What classes are needed for RN to BSN?

How many credits for RN to BSN?

How do I take exams?

Why do I have to take liberal arts and sciences courses in the RN to BSN program?



Still have questions? Let us help you.

Request information to connect with an admissions representative.

Let us help you find the right nursing program or option for you.

Are you a registered nurse?

Yes

No

Highest Degree Earned

What year did you graduate?

Next

Your Nursing School Support System

You're never alone at Chamberlain

What should you look for in an RN to BSN program? As a busy working nurse, you need a school that will be your partner every step of the way - helping you to clear hurdles and cheering you on throughout your journey to BSN.

Before you even start the RN to BSN program, you will have access to your courses for a Preview Week to get comfortable with the online learning environment. Your admissions representative can help you get in, do a walkthrough, show you where you can find things like your syllabus and discussion threads.



Caring Faculty

Faculty provide you with personalized support - responding to you within 24 hours on weekdays and 48 hours on the weekend.

A Simple Admissions Process

Learn the requirements to get started in the RN to BSN program

Admission Criteria

To get started on your RN to BSN, you'll need the following:

- A nursing diploma or associate degree in nursing from an institution accredited by an agency recognized by either the Council for Higher Education Accreditation (CHEA) or the U.S. Department of Education.
- A minimum cumulative grade point average (CGPA) of 2.0 on a 4.0 scale
- A current, active, unrestricted RN license in the U.S. or in a jurisdiction that is an associate member of the NCSBN

Your admissions representative is your partner throughout the process of enrollment - reach out to the team at 877.751.5783 or [request information](#).

Receive a Minimum 77 Credits as a Working RN

122 Total credits
- 77 Proficiency credits
45 Credits in RN to BSN Online Option
(minus additional qualifying transfer credits)

[Request Information](#)

RN to BSN Admission FAQ

What is a proficiency credit?

Can I transfer in additional credits?

How much time should I expect to devote to RN to BSN classes?

How often are RN to BSN classes offered?

RN to BSN Program Tuition & Expenses

Understand your costs and how to finance your nursing education

Earning your RN to BSN online is an important investment in yourself and your future - and you want to make sure you have all the information and support you need to take that step with confidence.

At Chamberlain, you'll work hand-in-hand with an RN BSN online admissions representative, who will help you create a financial plan that fits your needs. With our guidance, more than 90% of Chamberlain students receive some form of financial aid.

View the [total program cost](#) and a [breakdown of the tuition and expenses](#). Program revisions may impact total tuition for readmitted students.



\$14,000

On average, new student tuition is less than \$14K* for the RN to BSN program option.

*Average tuition based on 12 transfer or proficiency credits beyond the CCAP, and average institutional aid granted to currently enrolled students. Books and fees not included.



RN to BSN

RN to BSN Tuition FAQs

- What kind of financial aid is available? ▾
- How can I better understand my total costs? ▾
- Do hospitals pay for RN to BSN? Can my employer, community college or nursing association provide any tuition benefits? ▾
- How much is Chamberlain's online RN to BSN program? ▾



After 20 Years as a Registered Nurse, Returning for My BSN

April Wojcik had been a registered nurse for 20 years when she decided to go back to school to earn her Bachelor of Science in Nursing in the RN to BSN Online Option at Chamberlain.

Join a Proudly Accredited Institution

Earn your RN to BSN online from an accredited nursing school

Chamberlain has university accreditation from the [Higher Learning Commission \(HLC\)](#) and baccalaureate degree program in nursing accreditation from the [Commission on Collegiate Nursing Education \(CCNE\)](#).¹ Chamberlain continuously earns new approvals from respected agencies across the nation.



Chamberlain University confers online degrees from its Main Campus in Addison, IL.

For a complete list, check out our [authorizations](#) or [view our approvals in your state](#).

Distinguished Recognitions

Quality Matters

As a recipient of the Exemplary Online Program Certification, Online Teaching Support and Online Learning Support certifications, Chamberlain is the only RN to BSN option with the nationally recognized Quality Matters certification mark.



National League for Nursing

Chamberlain University College of Nursing was named a Center of Excellence™ in Nursing Education by the National League for Nursing for promoting the pedagogical expertise of faculty.



The DAISY Foundation

Chamberlain University is a proud partner of The DAISY Foundation, a non-profit organization dedicated to recognizing extraordinary nurses for their skill, kindness and compassion provided to their patients and families.



RN to BSN FAQs

- What is RN BSN? ▾
- What does RN to BSN mean? ▾
- Can you do RN to BSN online? ▾
- Do hospitals pay for RN to BSN? Can my employer, community college or nursing association provide any tuition benefits? ▾

Looking for a BSN option? Explore our [3-Year Bachelor of Science in Nursing](#) program.



[Student Portal Login](#)

Main Campus

Addison Campus
1221 North Swift Road
Addison, IL 60101

National Management Offices
500 W. Monroe St, Suite 1300
Chicago, IL 60661

[All Campus Locations](#)

[Contact](#)

Online Programs

[Master of Physician Assistant Studies](#)
[Alumni Association](#)
[Chamberlain Marketplace](#)
[Military](#)
[Leadership](#)
[Catalog & Viewbook](#)

Student Portal

[Student Consumer Info](#)
[Accreditation](#)
[Parent Organization](#)
[CA Performance Fact Sheets](#)
[CA BPPE Annual Report](#)
[CA BPPE Website](#)
[Cost of Attendance](#)

Careers

[Privacy Policy](#)
[Online Cookie Policy](#)
[Sitemap](#)
[Terms of Use](#)
[Accessibility](#)
[Student Disability Services](#)
[Office of Equity and Access](#)



2023 Chamberlain University LLC. All rights reserved.

[Online Cookie Policy](#) [Privacy Policy](#) [Sitemap](#) [Terms of Use](#)

*140,000 Chamberlain students, alumni and faculty

¹ Chamberlain University is accredited by the Higher Learning Commission ([www.hlcommission.org](#)), an institutional accreditation agency recognized by the U.S. Department of Education. The baccalaureate degree program in nursing, master's degree program in nursing, Doctor of Nursing Practice program and post-graduate APRN certificate program at Chamberlain University are accredited by the Commission on Collegiate Nursing Education, [ccneaccreditation.org](#). The Chamberlain University Doctor of Nursing Practice (delivered via distance education) is accredited by the National League for Nursing Commission for Nursing Education Accreditation (NLN CNEA) located at 2600 Virginia Avenue, NW, Washington, DC 20037 (202-909-2526). Chamberlain University's Master of Public Health Program is accredited by the Council on Education for Public Health, [www.ceph.org](#). For the most updated accreditation information, visit [chamberlain.edu/accreditation](#). Chamberlain University's Master of Social Work degree program is accredited by the Council on Social Work Education's Commission on Accreditation, [www.cswe.org](#). The Accreditation Review Commission on Education for the Physician Assistant, Inc. has granted Accreditation-Provisional status to the Chamberlain University Physician Assistant Program.

Certified to Operate by SCHEV.

To report unresolved complaints to the Illinois Board of Higher Education visit their webpage at <https://complaints.ihbe.org/> or by mail to 1 N. Old State Capitol Plaza, Suite 333, Springfield, IL 62701-1377. View Chamberlain's complaint process.

Chamberlain University confers online degrees from its Main Campus in Addison, IL.

Chamberlain University is a member of Adtalem Global Education Inc. [www.adtalem.com](#)

©2023 Chamberlain University LLC. All rights reserved.

MSN

Earn Your Master's in Nursing in as few as 2 years.



Next Start Date | Sept 04

[Request Information](#)



By Nurses, For Nurses

Our 100% doctorally-prepared faculty use their nursing experience to help you grow. Join a CCNE-accredited nursing school with more than 130 years of history educating nurses.



9 Specialty Track Options

Specialize your practice as you earn your MSN degree. Choose from specialty tracks including healthcare policy, nurse educator, nurse executive, nursing informatics, family nurse practitioner, adult-gerontology nurse practitioner, population health and psychiatric-mental health nurse practitioner.



You're in Good Company

You'll join a network of more than 90,000 students and alumni nationwide who step forward to support each other - and their patients.



90% of Students Receive Financial Aid

Partner tuition rates, alumni tuition rates, scholarships and grants are all available for our nursing MSN program. Work with an admissions representative to find the best financial plan.

What's Available for Me?

- Next Start Date: Sept 04, 2023
- Accreditation: CCNE
- Various options to earn an MSN degree
- Accelerated track options
- Nine specialty tracks

Specialize Your Practice with a Nursing MSN

Choose from 9 specialty tracks in the online MSN program

As a registered nurse, you've likely been drawn to a specific area of the profession - whether it is mentoring nursing students on the floor, working with the elderly population, or implementing new technology. Perhaps you have always dreamed of practicing more independently as a nurse practitioner or leading a team of nurses to develop treatment plans and navigate through their careers. Whichever path you feel most passionate about, Chamberlain's MSN nursing degree program can prepare you to take that next step by honing your skills in one of 9 specialty areas.

Prepare to take that next step in your nursing career by honing your skills in one of 9 specialty areas in Chamberlain's MSN degree program. If you're unsure which track is right for you, our admission team will partner with you to discuss your career goals. Chamberlain offers both a traditional MSN and accelerated MSN route to meet the varying needs of our students. For students wanting to go the traditional MSN route, it is recommended that students take one class per each eight-week session as they navigate their studies and personal life. For those who would like to complete their degree in a faster amount of time, our accelerated MSN route allows 2 - 3 courses per session to be taken with increased flexibility in managing work-life-family responsibilities while completing your coursework.



Nurse Practitioner Tracks

- Adult-Gerontology Nurse Practitioner: Acute and Primary Care
- Family Nurse Practitioner
- Psychiatric-Mental Health Nurse Practitioner NEW!

Non-Clinical Tracks

- Healthcare Policy
- Nurse Educator
- Nurse Executive
- Nursing Informatics
- Population Health

Accelerated Tracks

- Accelerated MSN
- Accelerated RN-MSN
- Accelerated MSN with Clinical Nurse Leadership



MSN

Get Started Now

- Responsive and engaged faculty
- Relentless, personalized support
- Classes begin every 8 weeks
- Largest nursing school in the country

Let us help you find the right MSN track for you.
Are you a registered nurse?

Yes No

Highest Degree Earned

What year did you graduate?

Next

Master of Science in Nursing Admission Requirements

How do I get started?

New students can enroll in the online MSN program every eight weeks, our next session starts Sept 04.

For your MSN nursing application, you should have:

- A degree in nursing at the bachelor's level or higher from an accredited institution
- A minimum undergraduate GPA of 3.0 on a 4.0 scale
- Current, active and unrestricted RN license in the U.S. or in a jurisdiction that is an associate member of the NCSBN

Can I transfer credits into the MSN program?

Chamberlain welcomes transfer students into our graduate nursing programs. General guidelines for the transfer of master's in nursing credits include:

- A maximum of six semester hours may be accepted towards your MSN degree
- Core coursework must have been completed within the past 7 years for transfer; specialty coursework with the past 5 years
- A grade of 'B' or higher is required for transfer credits
- For the NP specialty tracks, transfer credits will only be accepted for core courses

Our admissions team can get you started on a transcript evaluation so you'll know exactly what will transfer in before making your enrollment decision.



You're more than just a GPA or an application

If your CGPA falls below our requirements - in the range of 2.5 to 2.99 - you may still be considered for provisional acceptance into the online MSN Nursing Informatics program.

[Apply Now >](#)

MSN Nursing Tuition & Financial Aid

Explore your financial options to earn a master's degree in nursing


Earning a masters in nursing requires careful financial planning, and we're here to help guide you at every step of your journey towards achieving this very important goal.

How much does it cost to get a MSN degree?

View the [total program cost](#), and a [breakdown of the tuition and expenses](#). More than 90% of Chamberlain students receive some form of financial assistance. Check out our [Net Price Calculator](#) for an estimate of federal and institutional aid, or contact a student finance advisor, who can help you find a plan that fits your budget.

Important financing options to consider include:

- Partner Tuition Rates**
Your employer, community college or association may have an educational partnership with Chamberlain - [explore if you're eligible for exclusive savings](#) for the MSN nursing through one of thousands of partnerships
- Alumni Rates**
Additional savings for Chamberlain Grads! Now save 15% off your MSN Degree. Earning your MSN is closer than you think, save 15% on tuition, for a total savings of over \$4,600 - and, no application fees ever for alumni so you have nothing to lose, and everything to gain!
- \$3,500 in Scholarships and Grants available**
Chamberlain offers various financial aid options as well as [scholarships](#), alumni rates, and partner tuition rates to help you earn your masters in nursing and achieve your career goals.



Need help creating a financial plan for your graduate nursing program?

We're here to help. Contact our admissions team to discuss your financial options.

[Request Information](#)

Ask a Student

What was online learning like?

"The professors I had in the online environment were so knowledgeable and supportive that they inspired me to pursue teaching as a career."

Donna C.

RN-BSN to MSN graduate, education specialty track



Join a Proudly Accredited Institution

Are you looking for an accredited online master's in nursing degree program?

Chamberlain University accredited by the [Higher Learning Commission \(HLC\)](#), [www.hlcommission.com](#), an institutional accreditation agency recognized by the U.S. Department of Education.

Chamberlain University confers online degrees from its Main Campus in Addison, IL.

For a complete list, and to learn more, check out our [authorizations](#) or [view our approvals in your state](#).



MSN

See if you are eligible for special partner tuition rates

Chamberlain University has 270 Healthcare and Educational Institution, College and Association Partners across the country. Enjoy the following benefits:



Tuition
Partner Tuition Rates



Transcript
Transcript Request & Evaluation



Application
No application fee

Search for your employer below to see if you are eligible for special partner tuition rates:

Search for your employer to see if you are eligible



Master of Science in Nursing FAQs

What does a specialty track mean?

Can I switch specialty tracks if I decide I want another concentration during my MSN program?

How can I find out if I qualify for tuition savings?

Do I have to find my own preceptor or mentor? Can I complete my practicum hours where I work?

How many classes do you recommend I take at a time?

How will I communicate with my professors?

I've never taken an online course before and I'm a little nervous. How do I prepare myself for online learning?

Does Chamberlain offer an Accelerated MSN Option?

What's the difference between MSN and Accelerated MSN?

Can students in the Accelerated MSN Options transfer to the regular MSN degree program?

Can I transfer credits for the Accelerated MSN Options?



Student Portal Login

Main Campus

Addison Campus
1221 North Swift Road
Addison, IL 60101

National Management Offices
500 W. Monroe St, Suite 1300
Chicago, IL 60661

All Campus Locations

Contact

Online Programs

Master of Physician Assistant Studies
Alumni Association
Chamberlain Marketplace
Military
Leadership
Catalog & Viewbook

Student Portal

Student Consumer Info
Accreditation
Parent Organization
CA Performance Fact Sheets
CA BPPE Annual Report
CA BPPE Website
Cost of Attendance

Careers

Privacy Policy
Online Cookie Policy
Sitemap
Terms of Use
Accessibility
Student Disability Services
Office of Equity and Access



2023 Chamberlain University LLC. All rights reserved.

Online Cookie Policy Privacy Policy Sitemap Terms of Use

*140,000 Chamberlain students, alumni and faculty

*Chamberlain University is accredited by the Higher Learning Commission (www.hlcommission.org), an institutional accreditation agency recognized by the U.S. Department of Education. The baccalaureate degree program in nursing, master's degree program in nursing, Doctor of Nursing Practice program and post-graduate APRN certificate program at Chamberlain University are accredited by the Commission on Collegiate Nursing Education, cneaccreditation.org. The Chamberlain University Doctor of Nursing Practice (delivered via distance education) is accredited by the National League for Nursing Commission for Nursing Education Accreditation (NLN CNEA) located at 2600 Virginia Avenue, NW, Washington, DC 20037 (202-909-2526). Chamberlain University's Master of Public Health Program is accredited by the Council on Education for Public Health, www.ceph.org. For the most updated accreditation information, visit chamberlain.edu/accreditation. Chamberlain University's Master of Social Work degree program is accredited by the Council on Social Work Education's Commission on Accreditation, www.cswe.org. The Accreditation Review Commission on Education for the Physician Assistant, Inc. has granted Accreditation-Provisional status to the Chamberlain University Physician Assistant Program.

Certified to Operate by SCHEV.

To report unresolved complaints to the Illinois Board of Higher Education visit their webpage at <https://complaints.ibhe.org/> or by mail to 1N. Old State Capitol Plaza, Suite 333, Springfield, IL 62701-1377. View Chamberlain's complaint process.

Chamberlain University confers online degrees from its Main Campus in Addison, IL.

Chamberlain University is a member of Adtalem Global Education Inc. www.adtalem.com


©2023 Chamberlain University LLC. All rights reserved.



DNP

CURRENT STUDENTS INFORMATION FOR CHAT 877.751.5783

CHAMBERLAIN UNIVERSITY Programs Admission Financial Aid Why Chamberlain Apply Request More Info



Earn your DNP in as few as 2 years

Lead the Change in Healthcare

Are you a registered nurse?

Continue

Overview DNP at a Glance Elective Focus Areas Curriculum Admissions Tuition Accreditation

Online Doctor of Nursing Practice Degree Program

Next Start Date | Sept 04

[Request Information](#)

Take Your Nursing Career to the Next Level

Earning your Doctor of Nursing Practice (DNP) degree from Chamberlain provides you with the knowledge and confidence to help transform healthcare. As in any nursing practice program, the DNP degree path gives you the power to influence patient care in significant ways.

- 🕒 Chamberlain has the largest DNP program in the US
- 📖 100% online coursework
- 👤 Personalized advising
- 📍 Customized practicum experience at a location of your choice
- 🏆 Relentless, personalized support

You'll benefit from a practice-focused curriculum that puts knowledge into action and is taught by accomplished and attentive faculty and professional nursing leaders. This DNP online program is appropriate for all RNs who hold a master's degree or higher.



Program Details

Complete in: 6 Semesters

Next Start Date: Sept 04

Accreditation: CCNE & CNEA

Curriculum: 3 Elective Focus Areas

[Request Information](#)



What is a Doctor of Nursing Practice?

A Doctor of Nursing Practice (DNP) is a post-master's degree designed to prepare registered nurses for the highest level of professional nursing practice. Through online DNP programs, you will be prepared to work in leadership roles in a variety of healthcare delivery settings, paving the way for services that could revolutionize patient care.

What is the difference between a DNP and PhD?

A DNP is a doctorate degree in nursing that can help advance your career on the clinical/practice side, while a Doctor of Philosophy (PhD) in nursing focuses on teaching and nursing research.

What can I do with a DNP?

A DNP degree prepares you for a wide range of roles in a variety of healthcare settings. To learn more call 877.751.5783 to speak to a representative or [request more information](#).

DNP Programs at a glance:

- 🕒 Lead clinical practice change
- 📖 Advance expertise in a variety of topics
- 👤 Understand the foundations of key nursing research
- 📍 Build leadership skills that result in quality improvement and increased patient safety
- 👤 Provide primary care for vulnerable, culturally diverse populations
- 📖 Develop the skills necessary to influence health policy
- 👤 Be a mentor and practice nursing leadership among others seeking to influence health care

DNP Curriculum

What will I learn?

As part of Chamberlain's DNP degree program students have a choice of 3 elective focus areas to tailor their curriculum towards their leadership goals. Fully online and made to complement your DNP coursework, these focus areas consist of two additional leadership courses that are individual to each pathway.

[See Full Curriculum Plan](#)



Advance Your Practice

Use your knowledge of health science to lead primary care services that result in increased patient safety and health policy improvements



Choose Your Practicum Site

Follow a customized, four-part practicum experience at a location you choose



3 Elective Focus Areas

As part of Chamberlain's DNP degree program, students have a choice of elective focus areas to shape and personalize their nursing education experience

DNP Elective Focus Areas

Healthcare Systems Leadership

Educational Leadership

Advanced Practice Leadership

Get Started Now

- 👤 Responsive and engaged faculty
- 📖 Earn in as few as 6 semesters
- 👤 Choose from 3 Elective Focus Areas
- 🏆 Save up to \$3,600 on your DNP with our DNP Nursing Excellence Grant

Request information to learn more about our DNP program.

Are you a registered nurse?

Yes

No

Highest Degree Earned

What year did you graduate?

[Next](#)



DNP

Doctor of Nursing Practice Admission Requirements

How do I get started?

Get started on earning your DNP degree during one of six program starts per year at Chamberlain. For your doctorate degree in nursing application, you should have the following:

- Current, active, unrestricted RN license in the U.S. or in a jurisdiction that is an associate member of the NCSBN
- A degree in nursing at the master's level or higher OR a bachelor of science in nursing degree, and a degree in a discipline outside of nursing at the master's level or higher. A minimum CGPA of 3.0 on a 4.0 scale is required.
- Completion of the following courses, or evidence of attainment of each course outcome through transfer credit, a portfolio or coursework completed at Chamberlain:
 - NR-500: Foundational Concepts and Applications
 - NR-501: Theoretical Basis for Advanced Nursing Practice
 - NR-505: Advanced Research Methods: Evidence-Based Practice
 - NR-506: Healthcare Policy
 - NR-512: Fundamentals of Nursing Informatics



Get Started Now

Our online DNP admissions team is available to walk you through the application process and answer any questions on DNP program requirements.

[Request Information](#)

Accreditation

Accreditation, State Authorizations & Approvals

Chamberlain has university accreditation from the [Higher Learning Commission \(HLC\)](#) and Doctor of Nursing Practice program accreditation from the [Commission on Collegiate Nursing Education \(CCNE\)](#) and National League for Nursing [Commission for Nursing Education Accreditation \(NLN CNEA\)](#). * Chamberlain continuously earns new approvals from respected agencies across the nation.

The Chamberlain University Doctor of Nursing Practice program is pursuing accreditation from the National League for Nursing Commission for Nursing Education Accreditation (NLN CNEA), located at 2600 Virginia Avenue, NW, 8th Floor, Washington, DC 20037; phone 202-909-2487. Interested parties are invited to submit third-party comments in writing directly to NLN CNEA, attention Dr. Teresa Shellenbarger, NLN CNEA Executive Director, no later than September 18, 2023 to cneaaccreditation@nlm.org.

Chamberlain University confers online degrees from its Main Campus in Addison, IL.

For a complete list, check out our [authorizations](#) or [view our approvals in your state](#).



DNP Admission Criteria FAQs

What if I have nurse licensure outside the U.S. that is not affiliated with NCSBN?

How do I complete a Chamberlain portfolio?

What if I have a degree in nursing at the master's level or higher from an institution outside the U.S.?

Tuition & Expenses

DNP Degree Program Costs

Chamberlain provides you with individualized support throughout your educational journey to a DNP degree beginning with the admissions process. Check out the [Net Price Calculator](#) for an estimate of federal and institutional aid.

Save up to \$3,600 on your DNP with our DNP Nursing Excellence Grant, while funds are still available. See [Scholarships & Grants](#) to learn about eligibility and additional scholarship opportunities. View [tuition and expenses](#) information for the DNP degree program.

Financial Aid Options

Chamberlain's DNP degree program can help prepare you for expanded roles within your organization. Chamberlain proudly partners with healthcare institutions, community colleges, associations and organizations to provide accessible educational opportunities for registered nurses.

[See if your institution has partnered with Chamberlain](#), which may provide you with a group-specific tuition rate. We also offer a scholarship to DAISY Honoree Award recipients.

Resources

- [Tuition & Expenses Grid - Nursing \(PDF\)](#)
- [Total Cost Calculations - Nursing \(PDF\)](#)
- [Scholarship Guide \(PDF\)](#)



Chamberlain Grad? Save on Tuition for Your DNP Degree

Additional savings for Chamberlain Grad! Now save 20% off your DNP Degree.

Earning your DNP is closer than you think. Save 20% on tuition for a total savings of \$6,200 — plus, there are never any application fees for alumni. You have nothing to lose and everything to gain!

DNP Degree FAQs

What is a DNP degree?

How long is a DNP program?

What does the DNP practicum entail?

Are campus visits required to earn a doctorate degree in nursing?

How often will I go to class?


How do I go to class?

Can I teach with a DNP degree?

I am a registered nurse but I hold a non-nursing master's degree. Am I able to complete the DNP program?

Can I transfer any prior courses/credits into the DNP degree program?

DNP



[Student Portal Login](#)

- Main Campus**
Addison Campus
1221 North Swift Road
Addison, IL 60101
- National Management Offices**
500 W. Monroe St., Suite 1300
Chicago, IL 60661
- [All Campus Locations](#)
- [Contact](#)

- Online Programs**
 - [Master of Physician Assistant Studies](#)
 - [Alumni Association](#)
 - [Chamberlain Marketplace](#)
 - [Military](#)
 - [Leadership](#)
 - [Catalog & Viewbook](#)
- Student Portal**
 - [Student Consumer Info](#)
 - [Accreditation](#)
 - [Parent Organization](#)
 - [CA Performance Fact Sheets](#)
 - [CA BPPE Annual Report](#)
 - [CA BPPE Website](#)
 - [Cost of Attendance](#)
- Careers**
 - [Privacy Policy](#)
 - [Online Cookie Policy](#)
 - [Sitemap](#)
 - [Terms of Use](#)
 - [Accessibility](#)
 - [Student Disability Services](#)
 - [Office of Equity and Access](#)

[f](#) [t](#) [i](#) [in](#) [v](#) [p](#)

2023 Chamberlain University LLC. All rights reserved. [Online Cookie Policy](#) [Privacy Policy](#) [Sitemap](#) [Terms of Use](#)

*140,000 Chamberlain students, alumni and faculty

*Chamberlain University is accredited by the Higher Learning Commission (www.hlcommission.org), an institutional accreditation agency recognized by the U.S. Department of Education. The baccalaureate degree program in nursing, master's degree program in nursing, Doctor of Nursing Practice program and post-graduate APRN certificate program at Chamberlain University are accredited by the Commission on Collegiate Nursing Education, cneaccreditation.org. The Chamberlain University Doctor of Nursing Practice (delivered via distance education) is accredited by the National League for Nursing Commission for Nursing Education Accreditation (NLN CNEA) located at 2600 Virginia Avenue, NW, Washington, DC 20037 (202-909-2526). Chamberlain University's Master of Public Health Program is accredited by the Council on Education for Public Health, www.ceph.org. For the most updated accreditation information, visit chamberlain.edu/accreditation. Chamberlain University's Master of Social Work degree program is accredited by the Council on Social Work Education's Commission on Accreditation, www.cswe.org. The Accreditation Review Commission on Education for the Physician Assistant, Inc. has granted Accreditation-Provisional status to the Chamberlain University Physician Assistant Program.

Certified to Operate by SCHEV.

To report unresolved complaints to the Illinois Board of Higher Education visit their webpage at <https://complaints.ibhe.org/> or by mail to 1 N. Old State Capitol Plaza, Suite 333, Springfield, IL 62701-1377. View Chamberlain's complaint process.

Chamberlain University confers online degrees from its Main Campus in Addison, IL.

Chamberlain University is a member of Adtalem Global Education Inc. www.adtalem.com
©2023 Chamberlain University LLC. All rights reserved.





SECTION 3:
BROCHURES

Viewbook



<https://www.chamberlain.edu/media/4331/viewbook.pdf>



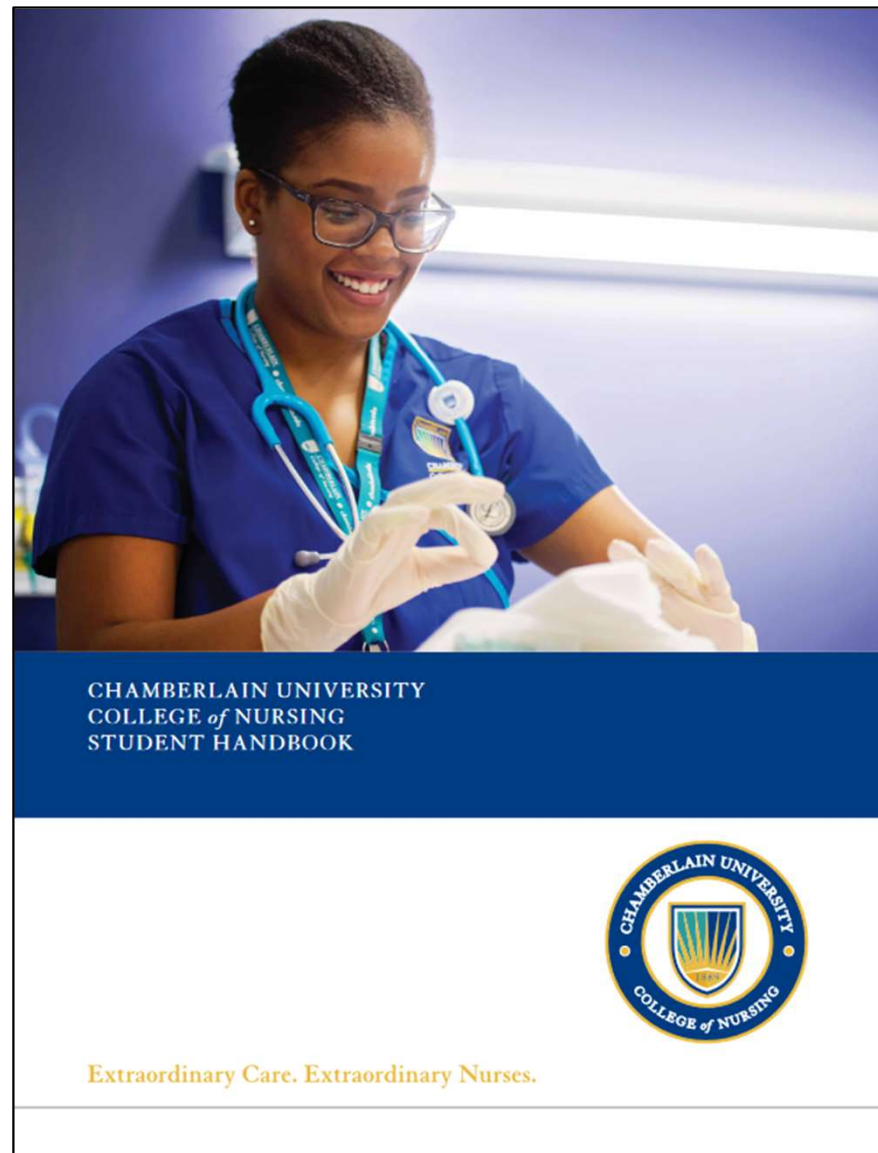
Academic Catalog



<https://www.chamberlain.edu/media/3371/catalog.pdf>



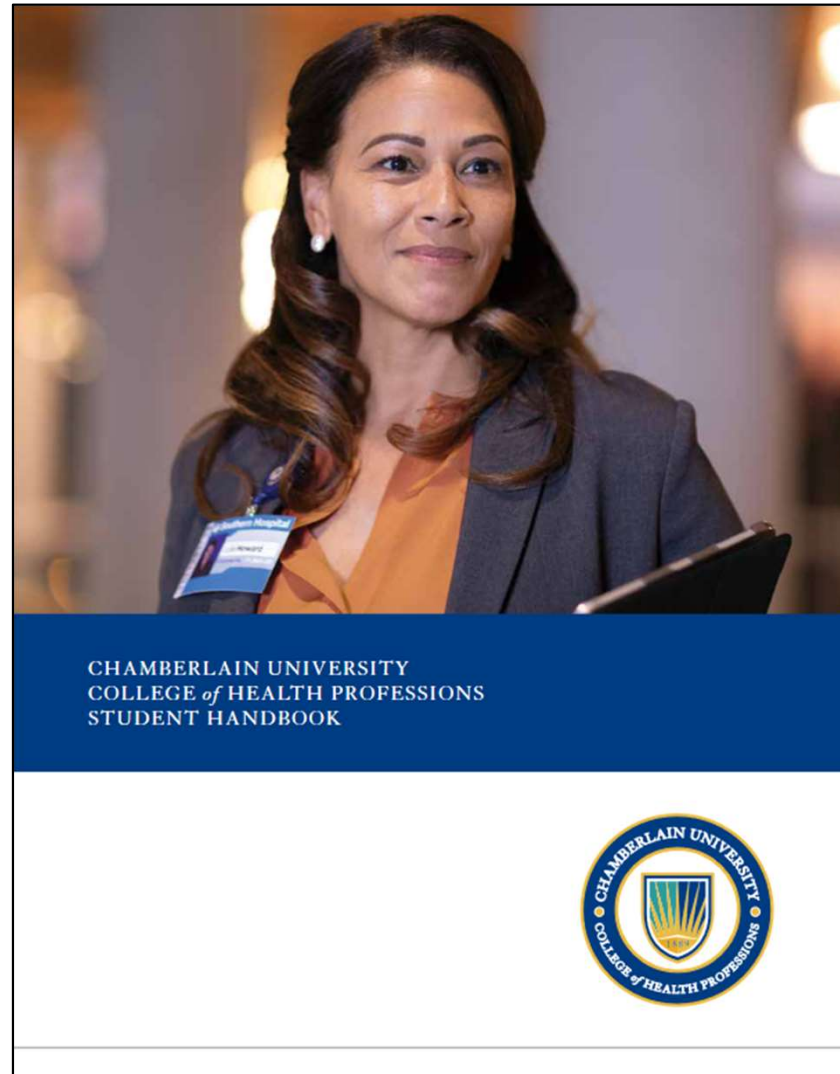
College of Nursing Student Handbook (for requests that include BSN)



<https://www.chamberlain.edu/media/8041/studenthandbook.pdf>



College of Health Professions Student Handbook (for requests that include post-licensure)



<https://www.chamberlain.edu/media/8011/chp-student-handbook.pdf>

